



Training and Technical Assistance Webinar Series

ISSUES IN USING ADMINISTRATIVE RECORDS

July 25, 2013

Justice Research and Statistics Association
720 7th Street, NW, Third Floor
Washington, DC 20001
www.jrsa.org

Issues in Using Administrative Records

Justice Research and Statistics Association Webinar
February 19, 2013

Dennis P. Culhane
Co-Principal Investigator,
Actionable Intelligence for Social Policy
University of Pennsylvania



Overview

- Definition of Administrative Data
- Sources for ...
- Strategies for obtaining ...
- Challenges to accessing...
- Data quality issues with ...
- Legal issues with ...
- Analytic strategies for ...
- Implications of ...
- Publication/Dissemination issues with ...
- Example Uses
- Actionable Intelligence for Social Policy: IDS Resources

Administrative records

What are they?

Data routinely gathered for operational or business purposes by public or private agencies

Examples:

Medicaid claims

Vital statistics

School attendance and achievement

Labor and wage data

Common Sources for Justice Research:

- Police incident reports (including geocodes)
- Police (arrests)
- Family court records; Juvenile Probation / Placements
- Corrections (jail and prison)
- Labor and wage data
- Vital records (births/deaths)
- Child welfare (out of home placements)
- School attendance (truancy), achievement, drop-out

Strategies for accessing....

- Legal agreements (MOU's or DEA's) between data sharing and data host agencies
- Governing/Advisory Board Oversight
- Partnership with research organizations (colleges/universities) with IRBs and which may be “covered entities”
- Encryption as alternative to identified data
- Develop political support as high up as possible

Challenges to accessing....

- Legal barriers – agencies have legal responsibilities for data stewardship
- Political barriers – some agencies may not want to cooperate or share with one another (turf issues, fear of transparency)
- Data barriers – staff availability and technical abilities; fear of “bad data” being discovered
- Technical/scientific barriers – need qualified analysts to conduct the work – not as simple as it may seem.

Data quality issues with....

- Coverage
- Completeness
- Accuracy
- Linkage approaches (deterministic v probabilistic)
- Data audit and validation checks
- Chart reviews
- Challenges with “charges” data in health records
- Know thy datasets.....

Legal issues with.....

- HIPAA, FERPA and the Common Rule
- Identified, Limited and Deidentified datasets
- Data storage and physical security
- Data destruction and certification
- Legal agreements (MOUs and DEAs)
- Accommodations: on-site linkage and analysis; agencies conduct the analysis and return results....

Common Analytic Strategies that Leverage Utility...

- Services utilization measures
- Event history analysis
- Time Series Analysis
- Cost-Offset Analysis

Implications

- Administrative data are the “language” of public agencies – defines and measures their activities/practices
- Agencies and public officials are sensitive to cost data and opportunities for efficiency and cost-savings
- Beware of over-promising – easy to find high cost users (and significant cost-offsets), but they don’t generalize to all cases.
- Need to show nuance – matching service supports and need, so as not to over-utilize and be inefficient

Publication/Dissemination issues

- Public agencies will/should want opportunity to preview results based on their data.
- Good to include agency researchers or analysts as coauthors on reports and papers
- Need to decide before project about auspices of research (academic or agency – affects dissemination rules)
- Need to develop “Executive friendly” versions of results and publications.

Questions



Young Adult Outcomes Of Youth Exiting Dependent Or Delinquent Care In Los Angeles County

Supported by the Conrad N. Hilton Foundation

Dennis Culhane, PhD & Thomas Byrne
School of Social Policy & Practice
University of Pennsylvania

Stephen Metraux, PhD
Department of Health Policy & Public Health
University of the Sciences in Philadelphia

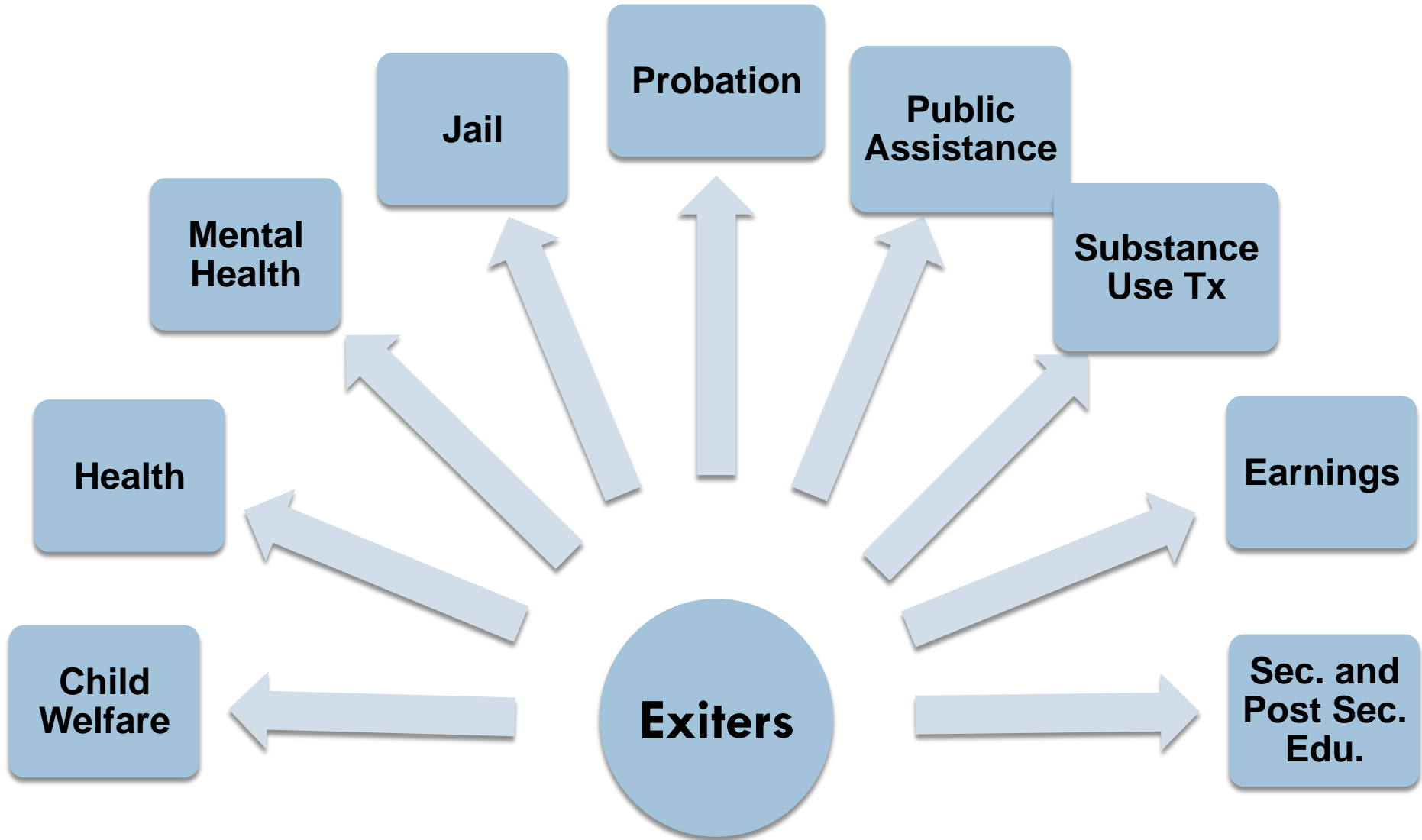
Manuel Moreno, PhD & Halil Toros, PhD
Research & Evaluation Services,
Chief Executive Office-Service Integration Branch
Los Angeles County

An example use of Integrated Administrative Records

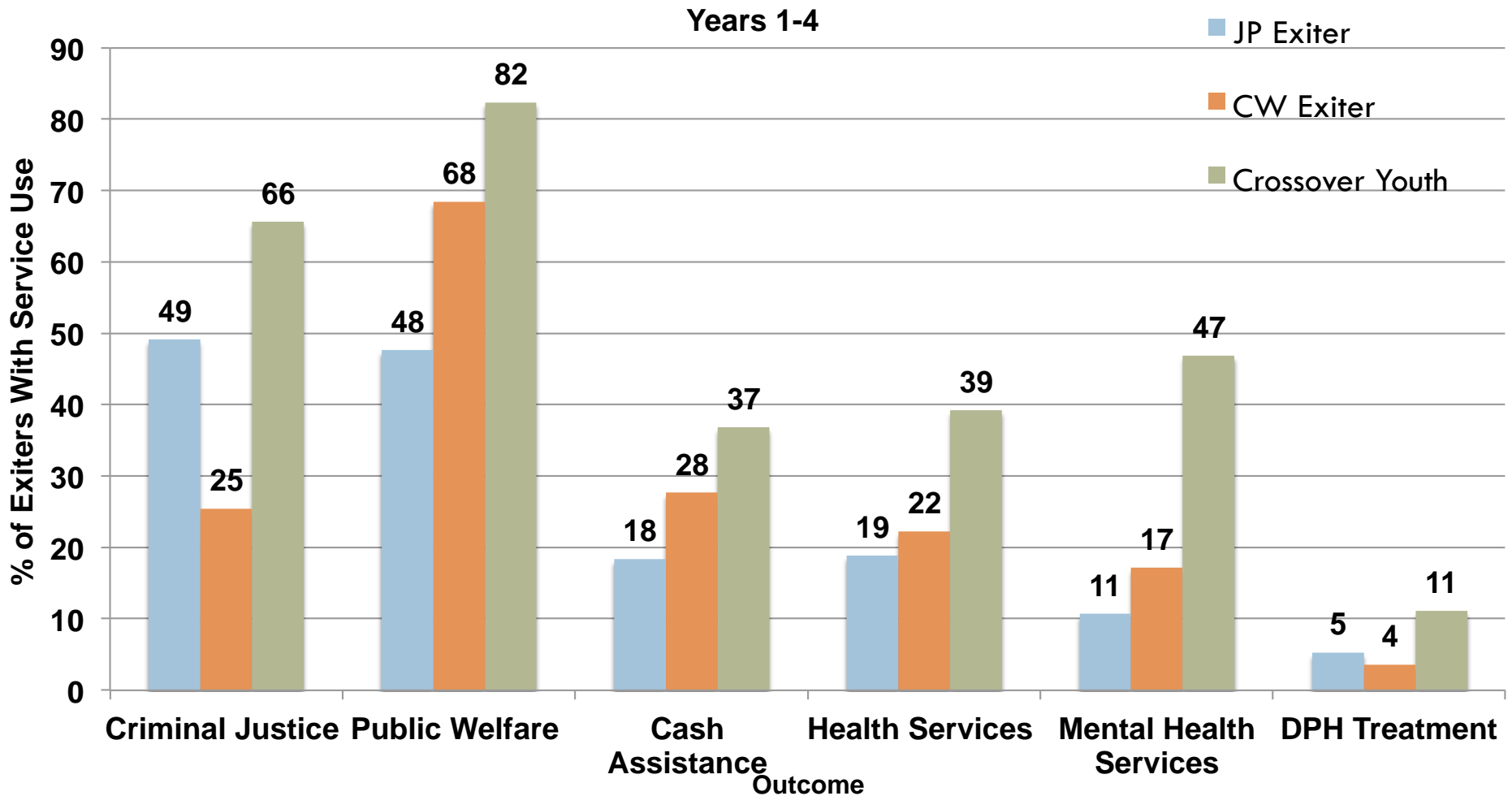
Analytic Approach

- Study focuses on **all** youth who exited child welfare and/or juvenile probation systems between ages of 16 and 21 in LA County
- Sample divided into three study groups:
 - Juvenile Probation (JP) group
 - Child Welfare (CW) group
 - Crossover group
- Assessed **longitudinal** outcomes in two four year periods:
 - Years 1-4 following exit
 - Years 5-8 following exit

Data Sources

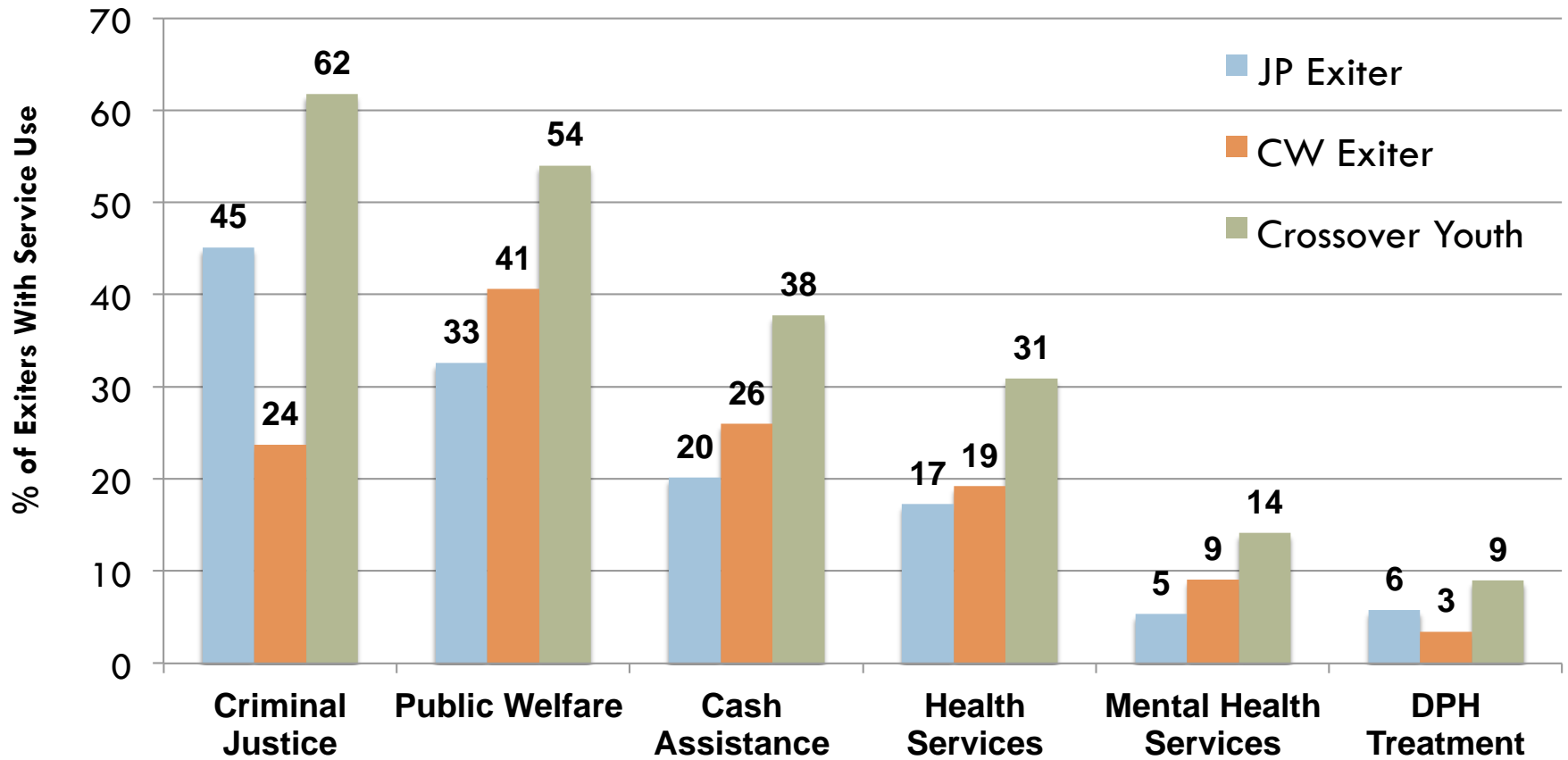


Outcomes By Domain

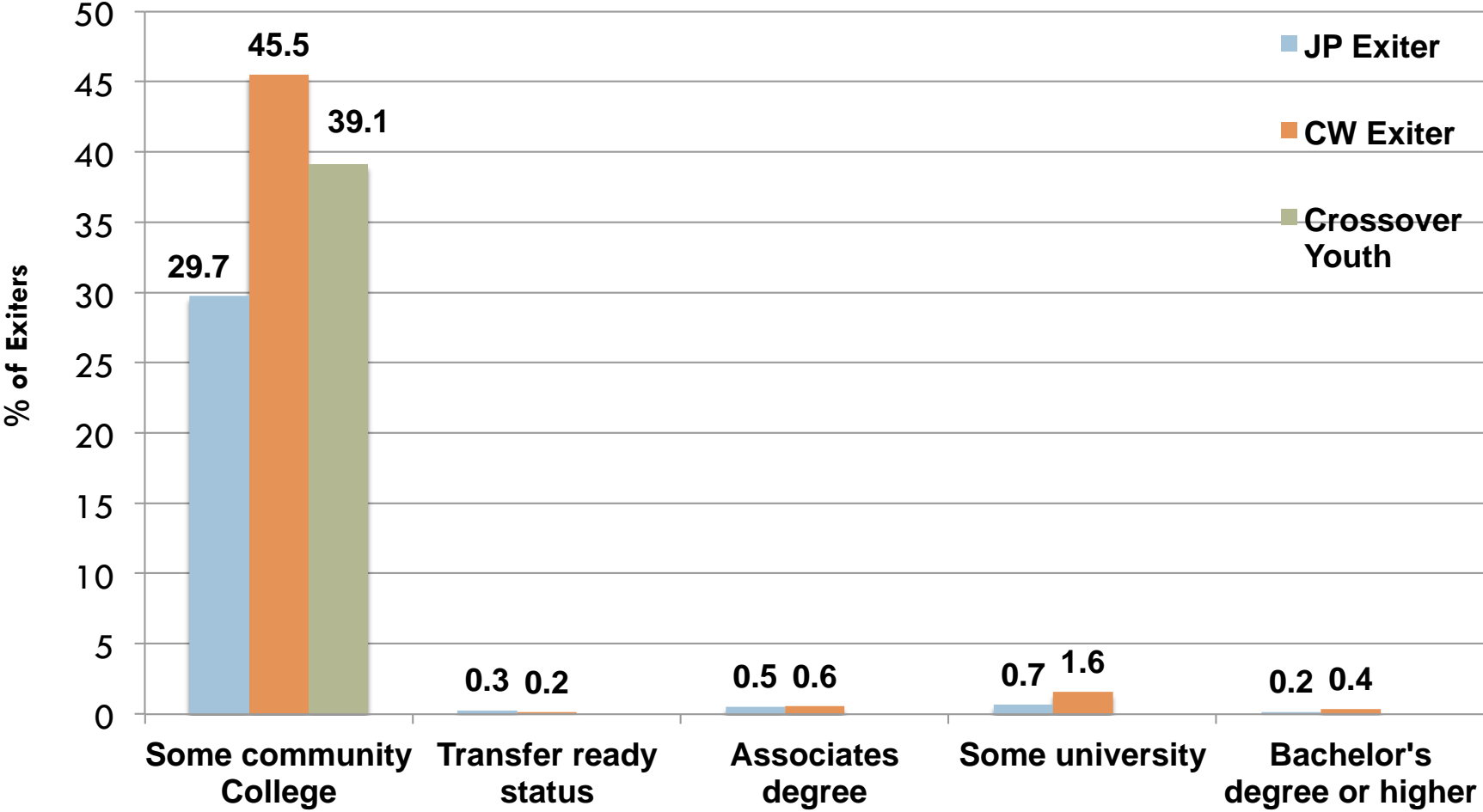


Outcomes By Domain

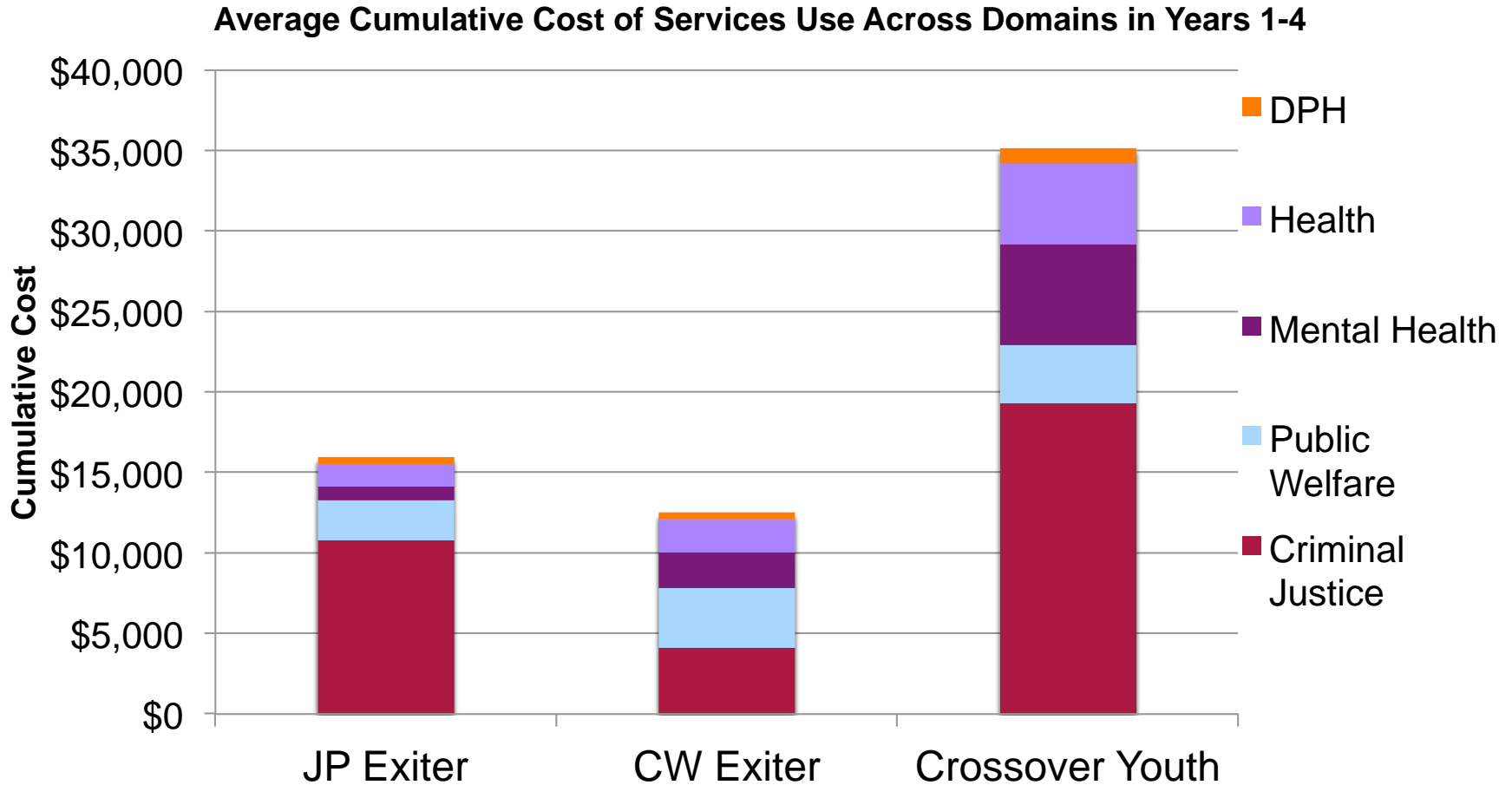
Years 5-8



Higher Education Outcomes

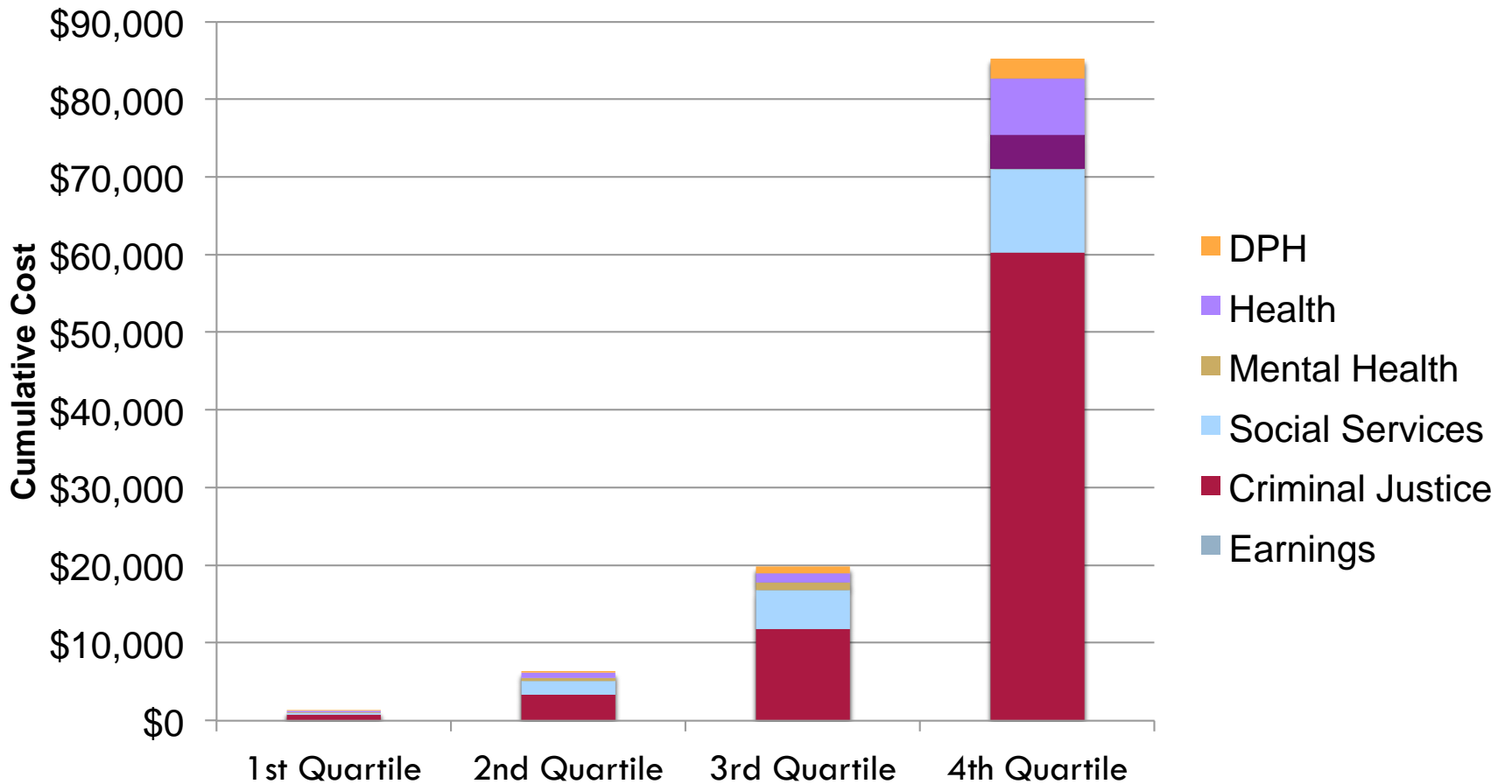


Cost Across Multiple Domains



Distribution of Service Costs

Cumulative Cost of Services Use in Years 1-4 (JP Group)



Implications For Policy & Research

- Sizeable proportions of youth in all three study groups continue to make substantial demands upon public services systems upon reaching adulthood
- Crossover youth (i.e. those involved in both child welfare and juvenile justice systems)
 - Comprise a particularly vulnerable group of exiters.
 - Warrant specific targeting for outreach and intervention

Implications For Policy & Research

- Identify heavy services users and provide them with intensive services that facilitate better outcomes and generate net cost savings.
 - Top **25%** of service users consumed about **75%** of the services used by the study group at an average cost of over **\$70,000** per person.
 - Identifying youth in this quartile for housing, coordinated health and mental health services, and case management could support successful transitions to adulthood in a cost-effective manner .

Actionable Intelligence for Social Policy: Promoting the future of integrated data systems

Network of integrated data systems (IDS).

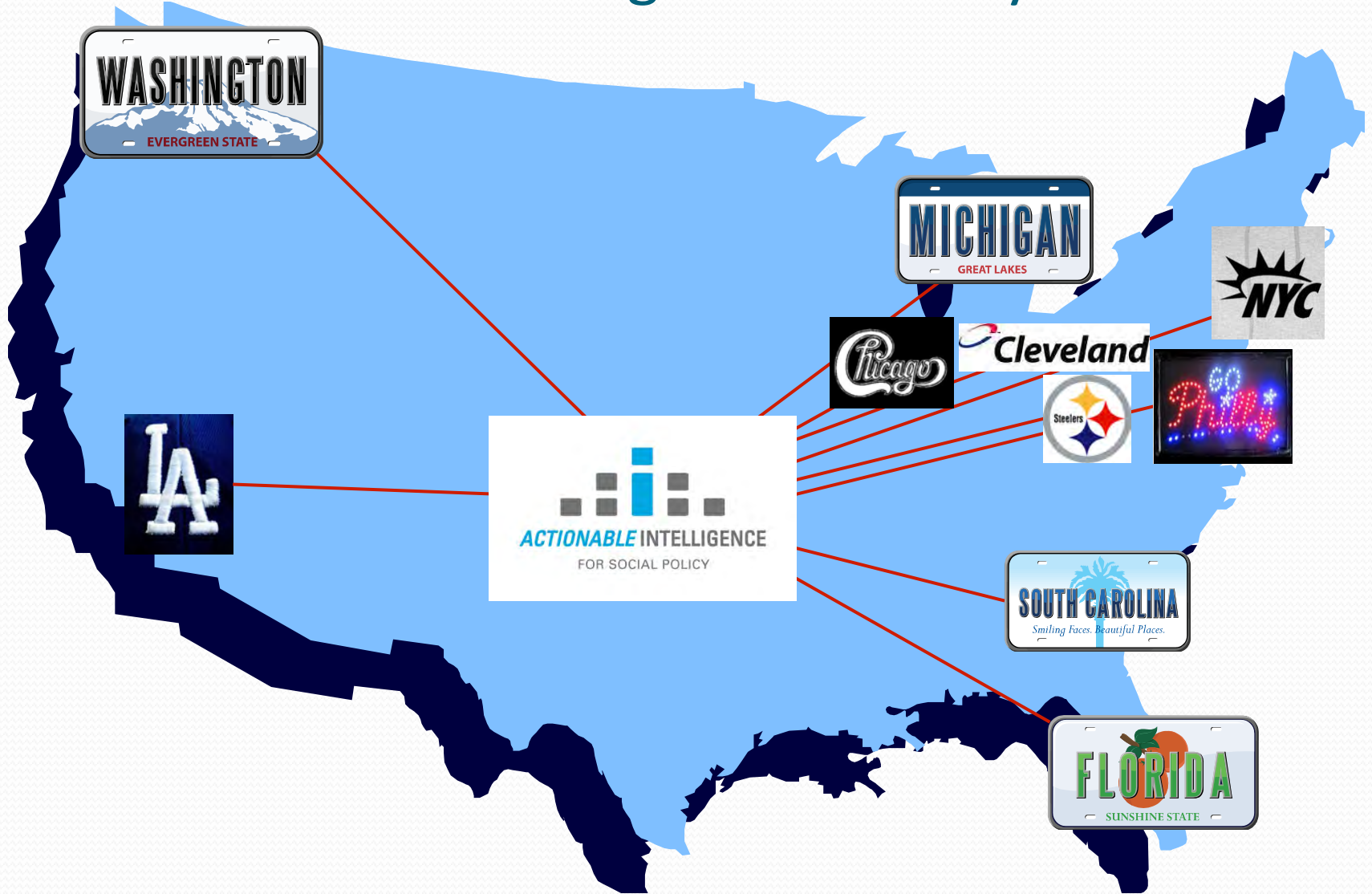
- 10 Sites: 4 States, 6 Large Cities / Counties

Best practices in IDS operations and use.

Establish new sites and develop existing ones.

Fund, execute, and show the value of IDS analyses.

Network of Integrated Data Systems



Example Multi-Site Projects

- Are there links between foster care and later juvenile justice involvement?
 - What practices are most important?
- Do veterans released from incarceration use VA services to promote better outcomes?
 - How can veterans be better connected?
- Do assisted housing programs support better educational outcomes for children?
 - What are the key mediators?

Contact Information

Actionable Intelligence for Social Policy

<http://www.aisp.upenn.edu>

Dennis Culhane, PhD

Email: Culhane@UPenn.edu

Phone: 215 – 746 – 3245