



# New York State Crime Report

Andrew M. Cuomo  
Governor

Michael C. Green  
Executive Deputy Commissioner

June 2017

## Crime in New York State 2016 Preliminary Data

New York State and the FBI use seven Index crime categories as indicators of overall crime trends: murder, rape, robbery, and aggravated assault, which are classified as violent crimes; and the property crimes of burglary, larceny and motor vehicle theft. The FBI created these categories to allow for uniform crime reporting across all 50 states. This report details 2016 Index crime in New York State, its 62 counties and two regions: New York City and the 57 counties outside of the five boroughs (Rest of State).

Police departments and sheriffs' offices report Index crime to the Division of Criminal Justice Services (DCJS) through the Uniform Crime Reporting and Incident Based Reporting programs. This report also details Index crime rates per 100,000 population statewide and by county and region. DCJS uses county population data from the FBI, which is based on U.S. Census estimates, to calculate those crime rates.

New York State implemented the FBI's expanded definition of rape in 2015; this resulted in an uptick in violent crime and reported rapes in that year when compared to prior years. As a result, caution should be used when citing or interpreting any percentage changes between rapes reported in 2015 and any subsequent year, to those reported in 2014 and earlier.

The FBI [made the change](#) to more accurately reflect the scope and volume of sexual assaults nationwide. Before the implementation, those offenses would have been classified by the FBI and state as Part II sex offenses.

This report compares Index and violent crime over the 10-year period from 2007 through 2016, but it *does not* include percentage change comparisons between rape statistics reported in 2007 vs. 2016 because of the expanded definition.

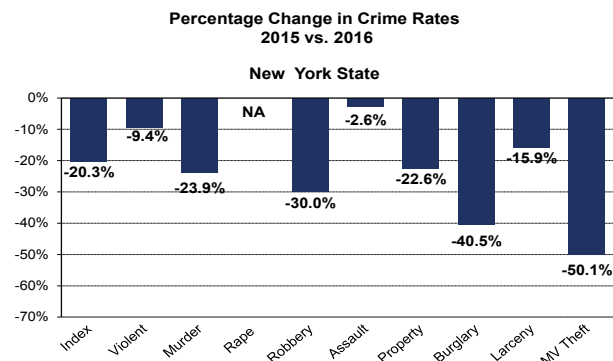
Index crimes reported by police departments and sheriffs' offices to DCJS annually from 2012 to 2016 are online: [www.criminaljustice.ny.gov](http://www.criminaljustice.ny.gov) (click the link to Statistics).

### Change in Crime Rates: 2007 vs. 2016

Reported crime reached an all-time low in 2016. A total of 375,962 Index crimes were reported, the fewest since statewide reporting began in 1975.

That milestone, combined with the state's population increasing by 450,000 residents over the past 10 years, resulted in the state's Index crime rate declining by 20 percent when comparing 2007 vs. 2016.

During this 10-year period, the violent crime rate has dropped 9 percent and the property crime rate has dropped 23 percent. Appendix 1 has additional details.

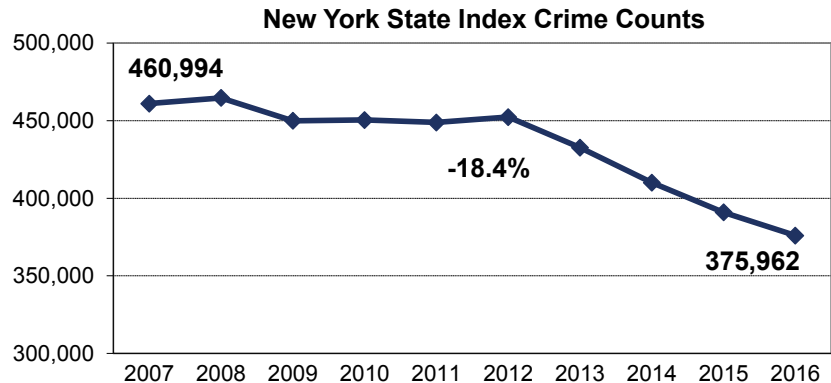


## Change in Crime Volume: 2007 vs. 2016

Between 2007 and 2016, index crime declined with 85,032 fewer crimes reported.

This represents an 18.4 percent reduction in the volume of reported crime over that 10-year period.

In addition, Index crime has declined annually since 2012.



## Trends in Regional Crime: 2007 to 2016

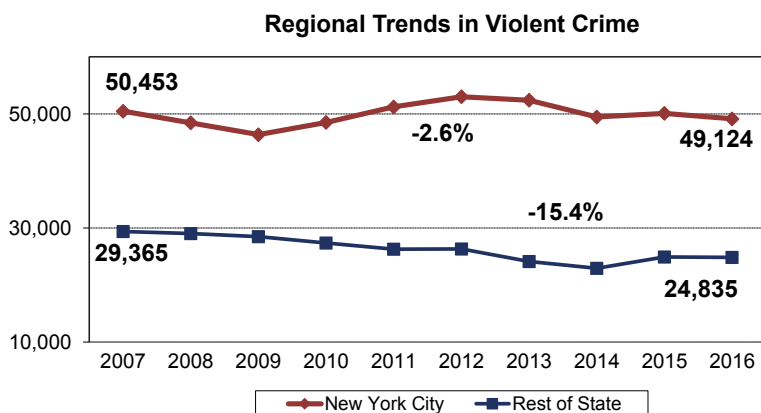
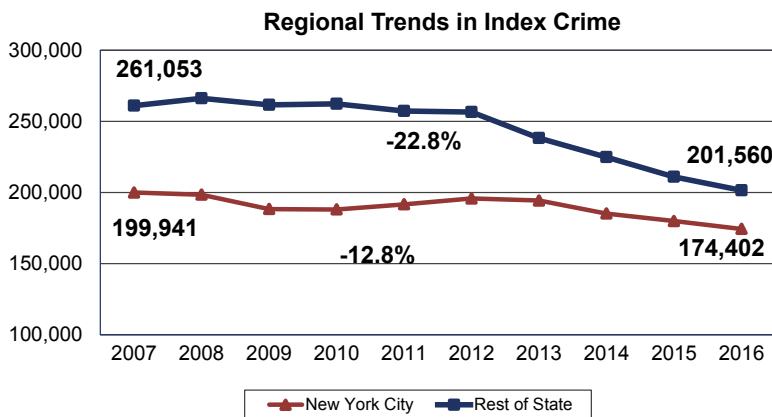
Index crimes in the state's two regions — New York City (five counties, also referred to as boroughs) and Rest of State (57 counties) — declined when comparing 2007 to 2016.

This 10-year period saw a shift in crime trends, with the number of Index crimes reported outside of New York City declining more sharply than those reported in the five boroughs.

Between 2007 and 2016, reported Index crime declined 12.8 percent in New York City and 22.8 percent in the Rest of State. During the same time period, the decrease in violent crime in the 57 counties was nearly six times greater than in New York City: 15.4 percent vs. 2.6 percent.

Index crime has decreased annually in New York City since 2012 while in the Rest of State, it has dropped every year since 2010.

As noted, New York State's implementation of the expanded definition of rape resulted in an uptick in violent crime in both regions from 2014 to 2015. This change resulted in 3,543 additional crimes being classified as rape; prior to the change, those offenses would have been classified by the FBI and state as Part II sex offenses.

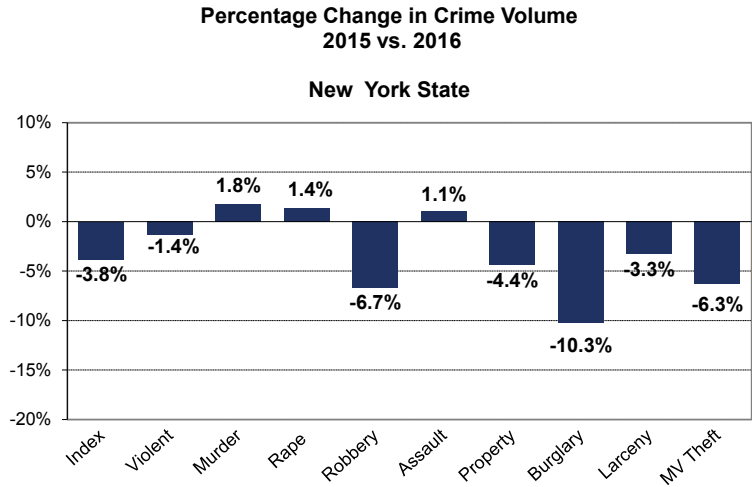


## Statewide Crime Trends: 2015 vs. 2016

The number of Index crimes reported in New York State decreased 3.8 percent in 2016 as compared to the previous year.

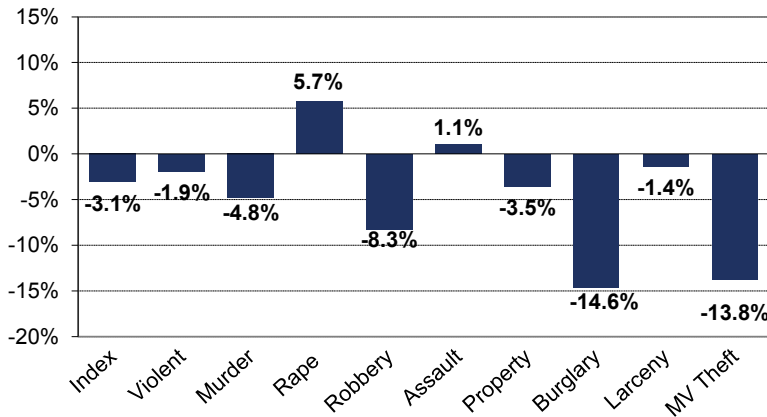
Four of the seven Index crimes declined, with the largest reductions observed in burglary (-10.3%), robbery (-6.7%) and motor vehicle theft (-6.3%).

Violent crime decreased by 1.4 percent, a decline entirely attributable to fewer reports of robbery (-6.7%). The three other violent crimes — murder, rape and aggravated assault — each increased slightly.

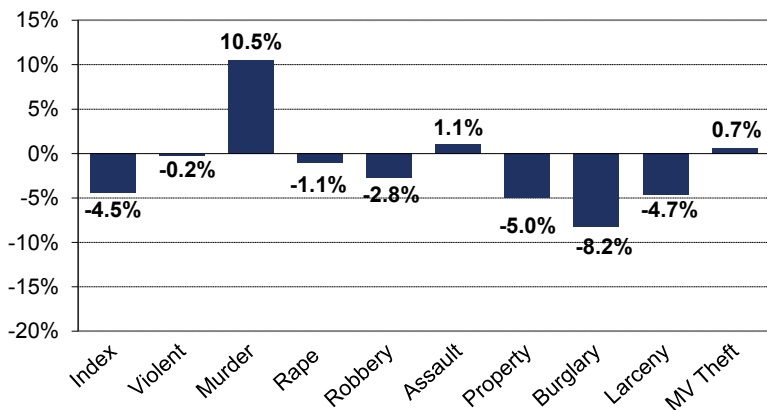


## Regional Crime Trends: 2015 vs. 2016

### New York City



### Rest of State



### New York City

The number of Index crimes decreased by 3.1 percent. The reduction in overall crime is largely attributable to fewer property crimes being reported: burglary declined 14.6 percent; motor vehicle theft, 13.8 percent; and larceny, 1.4 percent.

Violent crime decreased because of a significant reduction in robberies (8.3%). Murder declined by 4.8 percent, with 335 reported — the second fewest since 2007. Increases occurred in rape (+5.7%) and aggravated assault (+1.1%).

### Rest of State

Reported crime in the Rest of State decreased 4.5 percent, driven by reductions in four Index crimes — two violent and two property.

Burglary decreased 8.2 percent; larceny, 4.7 percent; robbery, 2.8 percent; and rape, 1.1 percent. Murders increased 10.5 percent, with 294 reported, the most since 2013.

*Note:* Police departments and sheriffs' offices reported rapes under the expanded definition of that crime in both 2015 and 2016, so comparisons between these years can be drawn.

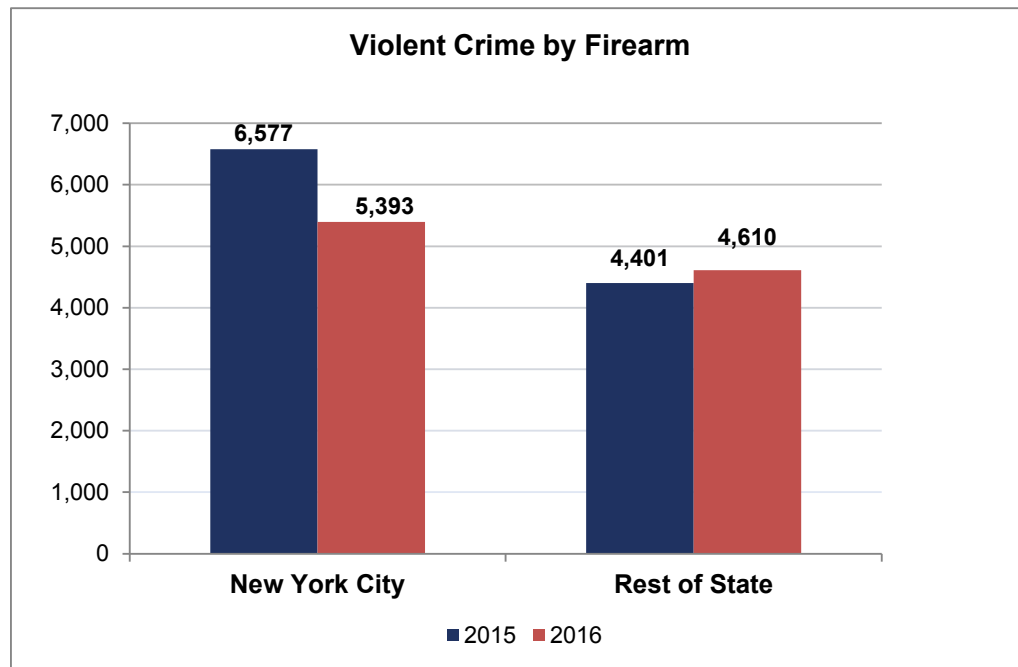
Appendix 3 lists crime rates by county for 2016 and Appendix 6 details crime counts by county for 2015 vs. 2016.

## Trends in Violent Crimes by Firearm 2015 vs. 2016

Police departments and sheriffs' offices in New York State report to DCJS the number of violent crimes that involved the use of a firearm.

In New York City, violent crimes involving firearms decreased by 18 percent, with 1,184 fewer crimes reported.

Violent crimes involving a firearm in the 57 counties outside of New York City increased by 5 percent, with 209 more crimes reported. See Appendix 4 for more details.



## Regional Trends in Homicide 2015 vs. 2016

Homicides increased (+1.8%), driven exclusively by a 10.5 percent increase (294 vs. 266) in homicides reported in the 57 counties outside of New York City. Homicides in the five boroughs decreased 4.8 percent (335 vs. 352). See Appendices 1 and 2 for more details.

Despite the statewide increase, there were significantly fewer homicides when comparing 2007 to 2016: 808 vs. 629, a decrease of 22.2 percent. Homicides by firearm showed a similar trend, declining 26.2 percent.

The number of non-firearm related homicides also decreased (-15.4%) when comparing 2007 to 2016, but there was a notable increase between 2015 and 2016 (+12.2%). It is important to note, however, that non-firearm related homicides reached an all-time low in 2015, with 230 reported.

<b>New York State Homicides 2007 - 2016</b>												% Change	
	2007	2008	2009	2010	2011	2012	2013	2014	2015	2016	2015-16	2007-16	
<b>Total Homicide</b>	<b>808</b>	<b>836</b>	<b>784</b>	<b>866</b>	<b>770</b>	<b>688</b>	<b>645</b>	<b>616</b>	<b>618</b>	<b>629</b>	<b>1.8%</b>	<b>-22.2%</b>	
Non-Firearm Related	305	363	301	344	322	277	279	268	230	258	12.2%	-15.4%	
Firearm Related	503	473	483	522	448	411	366	348	388	371	-4.4%	-26.2%	

Source: DCJS, Uniform Crime/Incident-Based Reporting system. Includes all reports received as of 4/17/2017.

### **Appendices 1 through 6**

Data Source: DCJS Uniform Crime and Incident Based Reporting systems; includes all reports received by the agency as of April 17, 2017.

The increase in violent crime and rape between 2014 and 2015 is attributable to New York State's implementation of the FBI's [expanded definition](#) of rape.

## Appendix 1

## New York State Index Crime Counts and Rates per 100,000 Population: 2007 - 2016

Counts	2007	2008	2009	2010	2011	2012	2013	2014	2015	2016	% change	
											2015-16	2007-16
<b>Index Crime</b>	<b>460,994</b>	<b>464,691</b>	<b>449,970</b>	<b>450,433</b>	<b>448,904</b>	<b>452,343</b>	<b>432,658</b>	<b>410,083</b>	<b>390,920</b>	<b>375,962</b>	<b>-3.8%</b>	<b>-18.4%</b>
<b>Violent Crime</b>	<b>79,818</b>	<b>77,441</b>	<b>74,830</b>	<b>75,836</b>	<b>77,463</b>	<b>79,303</b>	<b>76,475</b>	<b>72,360</b>	<b>74,982</b>	<b>73,959</b>	<b>-1.4%</b>	<b>-7.3%</b>
Murder	808	836	784	866	770	688	645	616	618	629	1.8%	-22.2%
Rape	2,924	2,787	2,565	2,766	2,771	2,831	2,615	2,539	6,117	6,203	1.4%	N/A
Robbery	31,036	31,743	28,063	28,405	28,352	28,555	27,176	23,993	23,830	22,236	-6.7%	-28.4%
Agg. Assault	45,050	42,075	43,418	43,799	45,570	47,229	46,039	45,212	44,417	44,891	1.1%	-0.4%
<b>Property Crime</b>	<b>381,176</b>	<b>387,250</b>	<b>375,140</b>	<b>374,597</b>	<b>371,441</b>	<b>373,040</b>	<b>356,183</b>	<b>337,723</b>	<b>315,938</b>	<b>302,003</b>	<b>-4.4%</b>	<b>-20.8%</b>
Burglary	64,834	65,514	62,677	64,695	65,087	64,077	56,174	50,653	43,989	39,470	-10.3%	-39.1%
Larceny	288,369	296,640	290,680	289,494	287,699	291,761	284,506	271,344	256,688	248,237	-3.3%	-13.9%
MV Theft	27,973	25,096	21,783	20,408	18,655	17,202	15,503	15,726	15,261	14,296	-6.3%	-48.9%
Rates per 100,000 Pop.	2007	2008	2009	2010	2011	2012	2013	2014	2015	2016	% change	
											2015-16	2007-16
<b>Index Crime</b>	<b>2,389.4</b>	<b>2,384.7</b>	<b>2,303.1</b>	<b>2,324.9</b>	<b>2,306.7</b>	<b>2,311.9</b>	<b>2,202.2</b>	<b>2,077.2</b>	<b>1,975.2</b>	<b>1,904.5</b>	<b>-3.6%</b>	<b>-20.3%</b>
<b>Violent Crime</b>	<b>413.7</b>	<b>397.4</b>	<b>383.0</b>	<b>391.4</b>	<b>398.0</b>	<b>405.3</b>	<b>389.3</b>	<b>366.5</b>	<b>378.9</b>	<b>374.6</b>	<b>-1.1%</b>	<b>-9.4%</b>
Murder	4.2	4.3	4.0	4.5	4.0	3.5	3.3	3.1	3.1	3.2	2.0%	-23.9%
Rape	15.2	14.3	13.1	14.3	14.2	14.5	13.3	12.9	30.9	31.4	1.7%	107.3%
Robbery	160.9	162.9	143.6	146.6	145.7	145.9	138.3	121.5	120.4	112.6	-6.5%	-30.0%
Agg. Assault	233.5	215.9	222.2	226.1	234.2	241.4	234.3	229.0	224.4	227.4	1.3%	-2.6%
<b>Property Crime</b>	<b>1,975.7</b>	<b>1,987.3</b>	<b>1,920.1</b>	<b>1,933.5</b>	<b>1,908.7</b>	<b>1,906.6</b>	<b>1,812.9</b>	<b>1,710.7</b>	<b>1,596.3</b>	<b>1,529.8</b>	<b>-4.2%</b>	<b>-22.6%</b>
Burglary	336.0	336.2	320.8	333.9	334.5	327.5	285.9	256.6	222.3	199.9	-10.0%	-40.5%
Larceny	1,494.6	1,522.3	1,487.8	1,494.2	1,478.4	1,491.2	1,448.1	1,374.5	1,297.0	1,257.5	-3.0%	-15.9%
MV Theft	145.0	128.8	111.5	105.3	95.9	87.9	78.9	79.7	77.1	72.4	-6.1%	-50.1%

## Appendix 2

## New York State Index Crime Summary by Region: 2007 - 2016

New York City	2007	2008	2009	2010	2011	2012	2013	2014	2015	2016	% change	
											2015-16	2007-16
<b>Index Crime</b>	<b>199,941</b>	<b>198,419</b>	<b>188,357</b>	<b>188,104</b>	<b>191,666</b>	<b>195,753</b>	<b>194,355</b>	<b>185,191</b>	<b>179,948</b>	<b>174,402</b>	<b>-3.1%</b>	<b>-12.8%</b>
<b>Violent Crime</b>	<b>50,453</b>	<b>48,430</b>	<b>46,357</b>	<b>48,489</b>	<b>51,209</b>	<b>52,993</b>	<b>52,384</b>	<b>49,444</b>	<b>50,088</b>	<b>49,124</b>	<b>-1.9%</b>	<b>-2.6%</b>
Murder	496	523	471	536	515	419	335	333	352	335	-4.8%	-32.5%
Rape	875	890	832	1,036	1,092	1,162	1,112	1,070	2,244	2,372	5.7%	N/A
Robbery	21,787	22,186	18,597	19,608	19,773	20,201	19,170	16,581	16,946	15,544	-8.3%	-28.7%
Agg. Assault	27,295	24,831	26,457	27,309	29,829	31,211	31,767	31,460	30,546	30,873	1.1%	13.1%
<b>Property Crime</b>	<b>149,488</b>	<b>149,989</b>	<b>142,000</b>	<b>139,615</b>	<b>140,457</b>	<b>142,760</b>	<b>141,971</b>	<b>135,747</b>	<b>129,860</b>	<b>125,278</b>	<b>-3.5%</b>	<b>-16.2%</b>
Burglary	20,914	19,867	18,780	17,926	18,159	18,635	16,606	15,916	14,098	12,041	-14.6%	-42.4%
Larceny	115,318	117,682	112,526	111,370	112,864	115,935	117,931	112,107	108,376	106,868	-1.4%	-7.3%
MV Theft	13,256	12,440	10,694	10,319	9,434	8,190	7,434	7,724	7,386	6,369	-13.8%	-52.0%
Rest of State	2007	2008	2009	2010	2011	2012	2013	2014	2015	2016	% change	
											2015-16	2007-16
<b>Index Crime</b>	<b>261,053</b>	<b>266,272</b>	<b>261,613</b>	<b>262,329</b>	<b>257,238</b>	<b>256,590</b>	<b>238,303</b>	<b>224,892</b>	<b>210,972</b>	<b>201,560</b>	<b>-4.5%</b>	<b>-22.8%</b>
<b>Violent Crime</b>	<b>29,365</b>	<b>29,011</b>	<b>28,473</b>	<b>27,347</b>	<b>26,254</b>	<b>26,310</b>	<b>24,091</b>	<b>22,916</b>	<b>24,894</b>	<b>24,835</b>	<b>-0.2%</b>	<b>-15.4%</b>
Murder	312	313	313	330	255	269	310	283	266	294	10.5%	-5.8%
Rape	2,049	1,897	1,733	1,730	1,679	1,669	1,503	1,469	3,873	3,831	-1.1%	N/A
Robbery	9,249	9,557	9,466	8,797	8,579	8,354	8,006	7,412	6,884	6,692	-2.8%	-27.6%
Agg. Assault	17,755	17,244	16,961	16,490	15,741	16,018	14,272	13,752	13,871	14,018	1.1%	-21.0%
<b>Property Crime</b>	<b>231,688</b>	<b>237,261</b>	<b>233,140</b>	<b>234,982</b>	<b>230,984</b>	<b>230,280</b>	<b>214,212</b>	<b>201,976</b>	<b>186,078</b>	<b>176,725</b>	<b>-5.0%</b>	<b>-23.7%</b>
Burglary	43,920	45,647	43,897	46,769	46,928	45,442	39,568	34,737	29,891	27,429	-8.2%	-37.5%
Larceny	173,051	178,958	178,154	178,124	174,835	175,826	166,575	159,237	148,312	141,369	-4.7%	-18.3%
MV Theft	14,717	12,656	11,089	10,089	9,221	9,012	8,069	8,002	7,875	7,927	0.7%	-46.1%

Appendix 3  
**New York State Index Crime Summary by County: 2016**  
**Rates per 100,000 Population**

County	Crime Rate			County	Crime Rate		
	Index	Violent	Property		Index	Violent	Property
Albany	2,812.2	353.4	2,458.8	Onondaga	2,386.8	303.9	2,082.9
Allegany	1,216.4	170.7	1,045.7	Ontario	1,709.4	150.3	1,559.0
Bronx	2,525.9	947.5	1,578.4	Orange	1,947.1	246.8	1,700.3
Broome	2,779.7	329.0	2,450.7	Orleans	1,821.7	190.0	1,631.7
Cattaraugus	1,619.9	183.7	1,436.3	Oswego	1,935.1	222.8	1,712.3
Cayuga	1,842.2	237.5	1,604.7	Otsego	1,299.9	150.2	1,149.7
Chautauqua	2,559.3	275.7	2,283.6	Putnam	613.8	37.7	576.2
Chemung	2,396.5	199.7	2,196.8	Queens	1,442.2	399.2	1,043.0
Chenango	2,000.9	205.3	1,795.6	Rensselaer	2,267.5	295.5	1,972.0
Clinton	1,719.4	165.1	1,554.3	Richmond	1,327.7	334.2	993.5
Columbia	1,320.6	159.5	1,161.1	Rockland	1,089.0	117.6	971.4
Cortland	1,707.6	89.5	1,618.0	St Lawrence	1,579.3	157.1	1,422.2
Delaware	1,475.3	206.3	1,269.0	Saratoga	1,242.1	111.5	1,130.5
Dutchess	1,400.5	192.6	1,207.9	Schenectady	3,038.6	451.4	2,587.2
Erie	2,815.0	413.4	2,401.5	Schoharie	1,247.6	116.7	1,130.9
Essex	1,073.3	152.9	920.4	Schuyler	654.0	72.1	582.0
Franklin	1,408.2	215.4	1,192.8	Seneca	1,856.8	194.1	1,662.7
Fulton	2,055.6	274.3	1,781.3	Steuben	1,539.5	193.3	1,346.2
Genesee	2,161.2	216.5	1,944.7	Suffolk	1,486.8	121.7	1,365.1
Greene	1,112.3	212.7	899.6	Sullivan	1,659.3	268.0	1,391.4
Hamilton	1,159.5	107.4	1,052.2	Tioga	946.5	129.1	817.5
Herkimer	1,698.2	193.9	1,504.3	Tompkins	1,741.2	139.2	1,602.0
Jefferson	2,030.2	240.0	1,790.2	Ulster	1,473.9	163.6	1,310.3
Kings	1,923.0	587.6	1,335.4	Warren	1,865.3	173.3	1,692.1
Lewis	870.8	112.1	758.7	Washington	921.9	154.2	767.7
Livingston	1,375.7	141.8	1,233.9	Wayne	1,569.9	162.6	1,407.3
Madison	1,433.9	171.7	1,262.2	Westchester	1,284.8	216.3	1,068.6
Monroe	2,501.7	332.0	2,169.7	Wyoming	806.8	118.4	688.4
Montgomery	2,077.8	168.7	1,909.0	Yates	1,289.1	68.5	1,220.6
Nassau	1,125.5	133.8	991.6				
New York	2,831.4	536.4	2,295.0	New York City	2,035.8	573.4	1,462.3
Niagara	2,914.6	401.4	2,513.2	Rest of State	1,803.8	222.3	1,581.6
Oneida	2,264.6	283.7	1,980.9	New York State	1,904.5	374.6	1,529.8

Appendix 4  
**Violent Crime by Firearm**  
**2015 vs. 2016**

	New York City		2015 vs. 16 % Change	Rest of State		2015 vs. 16 % Change
	2015	2016		2015	2016	
<b>Violent Crimes</b>	50,088	49,124	<b>-1.9%</b>	24,894	24,835	<b>-0.2%</b>
<b>Firearm Related</b>	6,577	5,393	<b>-18.0%</b>	4,401	4,610	<b>4.7%</b>
<b>Percent Firearm</b>	<b>13.1%</b>	<b>11.0%</b>		<b>17.7%</b>	<b>18.6%</b>	
Murder	352	335	-4.8%	266	294	10.5%
Firearm Related	235	203	-13.6%	153	168	9.8%
Percent Firearm	66.8%	60.6%		57.5%	57.1%	
Rape	2,244	2,372	5.7%	3,873	3,831	-1.1%
Firearm Related	18	20	11.1%	13	17	30.8%
Percent Firearm	0.8%	0.8%		0.3%	0.4%	
Robbery	16,946	15,544	-8.3%	6,884	6,692	-2.8%
Firearm Related	3,308	2,556	-22.7%	2,047	2,094	2.3%
Percent Firearm	19.5%	16.4%		29.7%	31.3%	
Aggravated Assault	30,546	30,873	1.1%	13,871	14,018	1.1%
Firearm Related	3,016	2,614	-13.3%	2,188	2,331	6.5%
Percent Firearm	9.9%	8.5%		15.8%	16.6%	

Appendix 5  
**Homicides and Homicides by Firearm**  
**2007 - 2016**

Year	New York City		Rest of State		New York State	
	Homicides	Firearm Related	Homicides	Firearm Related	Homicides	Firearm Related
2007	496	328	312	175	808	503
2008	523	294	313	179	836	473
2009	471	302	313	181	784	483
2010	536	323	330	199	866	522
2011	515	315	255	133	770	448
2012	419	241	269	170	688	411
2013	335	194	310	172	645	366
2014	333	188	283	160	616	348
2015	352	235	266	153	618	388
2016	335	203	294	168	629	371
<b>2007 vs. 2016 % Change</b>	<b>-32.5%</b>	<b>-38.1%</b>	<b>-5.8%</b>	<b>-4.0%</b>	<b>-22.2%</b>	<b>-26.2%</b>



Appendix 6  
**New York State Index Crime Summary by County**  
 2015 vs. 2016

County	Year	Total	Violent	Murder	Rape	Robbery	Agg. Assault	Property	Burglary	Larceny	MV Theft
Albany	2015	<b>8,636</b>	<b>1,043</b>	6	96	290	651	<b>7,593</b>	940	6,434	219
	2016	<b>8,673</b>	<b>1,090</b>	5	103	295	687	<b>7,583</b>	890	6,482	211
	% change	<b>0.4%</b>	<b>4.5%</b>	-16.7%	7.3%	1.7%	5.5%	<b>-0.1%</b>	-5.3%	0.7%	-3.7%
Allegany	2015	<b>579</b>	<b>57</b>	0	28	0	29	<b>522</b>	95	412	15
	2016	<b>570</b>	<b>80</b>	0	36	0	44	<b>490</b>	120	348	22
	% change	<b>-1.6%</b>	<b>40.4%</b>	NA	28.6%	NA	51.7%	<b>-6.1%</b>	26.3%	-15.5%	46.7%
Bronx	2015	<b>36,299</b>	<b>13,409</b>	91	556	4,386	8,376	<b>22,890</b>	2,530	18,767	1,593
	2016	<b>36,834</b>	<b>13,817</b>	98	615	4,297	8,807	<b>23,017</b>	2,459	19,191	1,367
	% change	<b>1.5%</b>	<b>3.0%</b>	7.7%	10.6%	-2.0%	5.1%	<b>0.6%</b>	-2.8%	2.3%	-14.2%
Broome	2015	<b>6,455</b>	<b>623</b>	7	154	148	314	<b>5,832</b>	931	4,791	110
	2016	<b>5,407</b>	<b>640</b>	5	128	142	365	<b>4,767</b>	987	3,590	190
	% change	<b>-16.2%</b>	<b>2.7%</b>	-28.6%	-16.9%	-4.1%	16.2%	<b>-18.3%</b>	6.0%	-25.1%	72.7%
Cattaraugus	2015	<b>1,275</b>	<b>125</b>	1	53	9	62	<b>1,150</b>	214	902	34
	2016	<b>1,217</b>	<b>138</b>	0	56	8	74	<b>1,079</b>	203	830	46
	% change	<b>-4.5%</b>	<b>10.4%</b>	-100.0%	5.7%	-11.1%	19.4%	<b>-6.2%</b>	-5.1%	-8.0%	35.3%
Cayuga	2015	<b>1,553</b>	<b>196</b>	0	67	14	115	<b>1,357</b>	224	1,099	34
	2016	<b>1,427</b>	<b>184</b>	1	64	17	102	<b>1,243</b>	241	971	31
	% change	<b>-8.1%</b>	<b>-6.1%</b>	NA	-4.5%	21.4%	-11.3%	<b>-8.4%</b>	7.6%	-11.6%	-8.8%
Chautauqua	2015	<b>3,309</b>	<b>354</b>	3	73	78	200	<b>2,955</b>	644	2,213	98
	2016	<b>3,305</b>	<b>356</b>	4	84	65	203	<b>2,949</b>	726	2,118	105
	% change	<b>-0.1%</b>	<b>0.6%</b>	33.3%	15.1%	-16.7%	1.5%	<b>-0.2%</b>	12.7%	-4.3%	7.1%
Chemung	2015	<b>1,903</b>	<b>159</b>	2	27	42	88	<b>1,744</b>	275	1,429	40
	2016	<b>2,064</b>	<b>172</b>	3	28	38	103	<b>1,892</b>	270	1,577	45
	% change	<b>8.5%</b>	<b>8.2%</b>	50.0%	3.7%	-9.5%	17.0%	<b>8.5%</b>	-1.8%	10.4%	12.5%
Chenango	2015	<b>849</b>	<b>101</b>	0	65	1	35	<b>748</b>	141	583	24
	2016	<b>965</b>	<b>99</b>	0	51	7	41	<b>866</b>	172	684	10
	% change	<b>13.7%</b>	<b>-2.0%</b>	NA	-21.5%	600.0%	17.1%	<b>15.8%</b>	22.0%	17.3%	-58.3%
Clinton	2015	<b>1,251</b>	<b>115</b>	0	59	6	50	<b>1,136</b>	172	940	24
	2016	<b>1,385</b>	<b>133</b>	0	66	4	63	<b>1,252</b>	199	1,034	19
	% change	<b>10.7%</b>	<b>15.7%</b>	NA	11.9%	-33.3%	26.0%	<b>10.2%</b>	15.7%	10.0%	-20.8%
Columbia	2015	<b>894</b>	<b>103</b>	3	40	9	51	<b>791</b>	161	616	14
	2016	<b>803</b>	<b>97</b>	0	40	6	51	<b>706</b>	127	568	11
	% change	<b>-10.2%</b>	<b>-5.8%</b>	-100.0%	0.0%	-33.3%	0.0%	<b>-10.7%</b>	-21.1%	-7.8%	-21.4%
Cortland	2015	<b>751</b>	<b>51</b>	2	16	8	25	<b>700</b>	141	549	10
	2016	<b>820</b>	<b>43</b>	1	19	2	21	<b>777</b>	154	616	7
	% change	<b>9.2%</b>	<b>-15.7%</b>	-50.0%	18.8%	-75.0%	-16.0%	<b>11.0%</b>	9.2%	12.2%	-30.0%

Appendix 6  
**New York State Index Crime Summary by County**  
 2015 vs. 2016

County	Year	Total	Violent	Murder	Rape	Robbery	Agg. Assault	Property	Burglary	Larceny	MV Theft
Delaware	2015	740	79	0	46	6	27	661	154	493	14
	2016	658	92	0	43	5	44	566	138	417	11
	% change	-11.1%	16.5%	NA	-6.5%	-16.7%	63.0%	-14.4%	-10.4%	-15.4%	-21.4%
Dutchess	2015	4,517	558	4	108	118	328	3,959	504	3,344	111
	2016	4,109	565	4	110	114	337	3,544	479	2,987	78
	% change	-9.0%	1.3%	0.0%	1.9%	-3.4%	2.7%	-10.5%	-5.0%	-10.7%	-29.7%
Erie	2015	26,091	3,788	46	296	1,302	2,144	22,303	4,306	16,695	1,302
	2016	25,818	3,792	51	305	1,288	2,148	22,026	4,154	16,692	1,180
	% change	-1.0%	0.1%	10.9%	3.0%	-1.1%	0.2%	-1.2%	-3.5%	0.0%	-9.4%
Essex	2015	382	46	0	25	2	19	336	97	227	12
	2016	393	56	0	22	1	33	337	99	230	8
	% change	2.9%	21.7%	NA	-12.0%	-50.0%	73.7%	0.3%	2.1%	1.3%	-33.3%
Franklin	2015	840	88	0	53	5	30	752	149	589	14
	2016	706	108	0	59	3	46	598	97	489	12
	% change	-16.0%	22.7%	NA	11.3%	-40.0%	53.3%	-20.5%	-34.9%	-17.0%	-14.3%
Fulton	2015	1,309	123	0	42	10	71	1,186	199	961	26
	2016	1,094	146	1	58	13	74	948	143	784	21
	% change	-16.4%	18.7%	NA	38.1%	30.0%	4.2%	-20.1%	-28.1%	-18.4%	-19.2%
Genesee	2015	1,199	115	2	37	15	61	1,084	168	879	37
	2016	1,258	126	0	37	20	69	1,132	203	878	51
	% change	4.9%	9.6%	-100.0%	0.0%	33.3%	13.1%	4.4%	20.8%	-0.1%	37.8%
Greene	2015	602	116	0	32	3	81	486	124	352	10
	2016	523	100	0	31	2	67	423	110	302	11
	% change	-13.1%	-13.8%	NA	-3.1%	-33.3%	-17.3%	-13.0%	-11.3%	-14.2%	10.0%
Hamilton	2015	43	3	0	3	0	0	40	16	23	1
	2016	54	5	0	2	0	3	49	16	32	1
	% change	25.6%	66.7%	NA	-33.3%	NA	NA	22.5%	0.0%	39.1%	0.0%
Herkimer	2015	1,021	98	1	24	3	70	923	157	734	32
	2016	1,060	121	0	31	11	79	939	151	767	21
	% change	3.8%	23.5%	-100.0%	29.2%	266.7%	12.9%	1.7%	-3.8%	4.5%	-34.4%
Jefferson	2015	2,543	221	3	82	17	119	2,322	399	1,873	50
	2016	2,377	281	2	92	17	170	2,096	350	1,697	49
	% change	-6.5%	27.1%	-33.3%	12.2%	0.0%	42.9%	-9.7%	-12.3%	-9.4%	-2.0%
Kings	2015	53,957	16,385	146	659	5,686	9,894	37,572	5,077	30,015	2,480
	2016	50,802	15,523	128	678	4,907	9,810	35,279	3,832	29,366	2,081
	% change	-5.8%	-5.3%	-12.3%	2.9%	-13.7%	-0.8%	-6.1%	-24.5%	-2.2%	-16.1%

Appendix 6  
**New York State Index Crime Summary by County**  
 2015 vs. 2016

County	Year	Total	Violent	Murder	Rape	Robbery	Agg. Assault	Property	Burglary	Larceny	MV Theft
Lewis	2015	281	27	0	9	1	17	254	90	158	6
	2016	233	30	1	20	0	9	203	70	129	4
	% change	-17.1%	11.1%	NA	122.2%	-100.0%	-47.1%	-20.1%	-22.2%	-18.4%	-33.3%
Livingston	2015	885	77	0	35	7	35	808	129	652	27
	2016	883	91	4	25	8	54	792	120	650	22
	% change	-0.2%	18.2%	NA	-28.6%	14.3%	54.3%	-2.0%	-7.0%	-0.3%	-18.5%
Madison	2015	1,010	106	1	51	12	42	904	154	729	21
	2016	1,019	122	1	59	11	51	897	138	724	35
	% change	0.9%	15.1%	0.0%	15.7%	-8.3%	21.4%	-0.8%	-10.4%	-0.7%	66.7%
Monroe	2015	20,524	2,523	38	289	829	1,367	18,001	3,147	13,787	1,067
	2016	18,652	2,475	44	268	847	1,316	16,177	2,568	12,647	962
	% change	-9.1%	-1.9%	15.8%	-7.3%	2.2%	-3.7%	-10.1%	-18.4%	-8.3%	-9.8%
Montgomery	2015	1,263	99	0	36	13	50	1,164	212	918	34
	2016	1,022	83	1	29	14	39	939	153	768	18
	% change	-19.1%	-16.2%	NA	-19.4%	7.7%	-22.0%	-19.3%	-27.8%	-16.3%	-47.1%
Nassau	2015	16,357	1,984	21	80	832	1,051	14,373	1,709	11,980	684
	2016	15,264	1,815	20	52	734	1,009	13,449	1,483	11,275	691
	% change	-6.7%	-8.5%	-4.8%	-35.0%	-11.8%	-4.0%	-6.4%	-13.2%	-5.9%	1.0%
New York	2015	47,307	8,789	41	467	3,148	5,133	38,518	2,538	35,156	824
	2016	46,653	8,839	41	494	2,929	5,375	37,814	2,206	34,867	741
	% change	-1.4%	0.6%	0.0%	5.8%	-7.0%	4.7%	-1.8%	-13.1%	-0.8%	-10.1%
Niagara	2015	5,918	779	5	80	206	488	5,139	1,090	3,838	211
	2016	6,135	845	4	68	278	495	5,290	1,060	3,909	321
	% change	3.7%	8.5%	-20.0%	-15.0%	35.0%	1.4%	2.9%	-2.8%	1.8%	52.1%
Oneida	2015	5,453	583	7	141	110	325	4,870	883	3,816	171
	2016	5,220	654	4	155	140	355	4,566	854	3,559	153
	% change	-4.3%	12.2%	-42.9%	9.9%	27.3%	9.2%	-6.2%	-3.3%	-6.7%	-10.5%
Onondaga	2015	11,574	1,500	24	149	432	895	10,074	1,850	7,785	439
	2016	11,112	1,415	34	156	398	827	9,697	1,683	7,502	512
	% change	-4.0%	-5.7%	41.7%	4.7%	-7.9%	-7.6%	-3.7%	-9.0%	-3.6%	16.6%
Ontario	2015	1,835	144	1	54	23	66	1,691	352	1,314	25
	2016	1,865	164	1	78	18	67	1,701	303	1,365	33
	% change	1.6%	13.9%	0.0%	44.4%	-21.7%	1.5%	0.6%	-13.9%	3.9%	32.0%
Orange	2015	7,244	918	6	144	218	550	6,326	863	5,279	184
	2016	7,321	928	11	134	234	549	6,393	768	5,428	197
	% change	1.1%	1.1%	83.3%	-6.9%	7.3%	-0.2%	1.1%	-11.0%	2.8%	7.1%

Appendix 6  
**New York State Index Crime Summary by County**  
 2015 vs. 2016

County	Year	Total	Violent	Murder	Rape	Robbery	Agg. Assault	Property	Burglary	Larceny	MV Theft
Orleans	2015	<b>673</b>	<b>69</b>	0	21	3	45	<b>604</b>	143	442	19
	2016	<b>748</b>	<b>78</b>	0	23	8	47	<b>670</b>	143	498	29
	% change	<b>11.1%</b>	<b>13.0%</b>	NA	9.5%	166.7%	4.4%	<b>10.9%</b>	0.0%	12.7%	52.6%
Oswego	2015	<b>2,373</b>	<b>251</b>	2	126	26	97	<b>2,122</b>	507	1,564	51
	2016	<b>2,302</b>	<b>265</b>	0	121	21	123	<b>2,037</b>	459	1,509	69
	% change	<b>-3.0%</b>	<b>5.6%</b>	-100.0%	-4.0%	-19.2%	26.8%	<b>-4.0%</b>	-9.5%	-3.5%	35.3%
Otsego	2015	<b>841</b>	<b>78</b>	2	42	6	28	<b>763</b>	141	600	22
	2016	<b>779</b>	<b>90</b>	0	35	10	45	<b>689</b>	113	564	12
	% change	<b>-7.4%</b>	<b>15.4%</b>	-100.0%	-16.7%	66.7%	60.7%	<b>-9.7%</b>	-19.9%	-6.0%	-45.5%
Putnam	2015	<b>589</b>	<b>43</b>	0	12	3	28	<b>546</b>	89	430	27
	2016	<b>603</b>	<b>37</b>	0	10	6	21	<b>566</b>	86	456	24
	% change	<b>2.4%</b>	<b>-14.0%</b>	NA	-16.7%	100.0%	-25.0%	<b>3.7%</b>	-3.4%	6.0%	-11.1%
Queens	2015	<b>35,920</b>	<b>9,854</b>	60	468	3,270	6,056	<b>26,066</b>	3,396	20,400	2,270
	2016	<b>33,800</b>	<b>9,356</b>	47	486	2,989	5,834	<b>24,444</b>	3,056	19,455	1,933
	% change	<b>-5.9%</b>	<b>-5.1%</b>	-21.7%	3.8%	-8.6%	-3.7%	<b>-6.2%</b>	-10.0%	-4.6%	-14.8%
Rensselaer	2015	<b>4,195</b>	<b>546</b>	10	56	174	306	<b>3,649</b>	676	2,821	152
	2016	<b>3,614</b>	<b>471</b>	4	62	114	291	<b>3,143</b>	613	2,377	153
	% change	<b>-13.8%</b>	<b>-13.7%</b>	-60.0%	10.7%	-34.5%	-4.9%	<b>-13.9%</b>	-9.3%	-15.7%	0.7%
Richmond	2015	<b>6,465</b>	<b>1,651</b>	14	94	456	1,087	<b>4,814</b>	557	4,038	219
	2016	<b>6,313</b>	<b>1,589</b>	21	99	422	1,047	<b>4,724</b>	488	3,989	247
	% change	<b>-2.4%</b>	<b>-3.8%</b>	50.0%	5.3%	-7.5%	-3.7%	<b>-1.9%</b>	-12.4%	-1.2%	12.8%
Rockland	2015	<b>3,763</b>	<b>482</b>	4	62	122	294	<b>3,281</b>	291	2,895	95
	2016	<b>3,557</b>	<b>384</b>	2	48	104	230	<b>3,173</b>	255	2,800	118
	% change	<b>-5.5%</b>	<b>-20.3%</b>	-50.0%	-22.6%	-14.8%	-21.8%	<b>-3.3%</b>	-12.4%	-3.3%	24.2%
St Lawrence	2015	<b>1,669</b>	<b>143</b>	2	53	14	74	<b>1,526</b>	279	1,218	29
	2016	<b>1,739</b>	<b>173</b>	1	66	22	84	<b>1,566</b>	276	1,260	30
	% change	<b>4.2%</b>	<b>21.0%</b>	-50.0%	24.5%	57.1%	13.5%	<b>2.6%</b>	-1.1%	3.4%	3.4%
Saratoga	2015	<b>2,841</b>	<b>256</b>	0	81	24	151	<b>2,585</b>	361	2,166	58
	2016	<b>2,807</b>	<b>252</b>	2	73	24	153	<b>2,555</b>	325	2,131	99
	% change	<b>-1.2%</b>	<b>-1.6%</b>	NA	-9.9%	0.0%	1.3%	<b>-1.2%</b>	-10.0%	-1.6%	70.7%
Schenectady*	2015	<b>4,210</b>	<b>509</b>	10	46	123	330	<b>3,701</b>	551	3,057	93
	2016	<b>4,665</b>	<b>693</b>	7	79	166	441	<b>3,972</b>	571	3,156	245
	% change	<b>10.8%</b>	<b>36.1%</b>	-30.0%	71.7%	35.0%	33.6%	<b>7.3%</b>	3.6%	3.2%	163.4%
Schoharie	2015	<b>402</b>	<b>38</b>	1	20	0	17	<b>364</b>	63	289	12
	2016	<b>385</b>	<b>36</b>	0	25	3	8	<b>349</b>	66	271	12
	% change	<b>-4.2%</b>	<b>-5.3%</b>	-100.0%	25.0%	NA	-52.9%	<b>-4.1%</b>	4.8%	-6.2%	0.0%

Appendix 6  
**New York State Index Crime Summary by County**  
 2015 vs. 2016

County	Year	Total	Violent	Murder	Rape	Robbery	Agg. Assault	Property	Burglary	Larceny	MV Theft
Schuyler	2015	149	14	0	9	2	3	135	20	114	1
	2016	118	13	0	4	0	9	105	23	79	3
	% change	-20.8%	-7.1%	NA	-55.6%	-100.0%	200.0%	-22.2%	15.0%	-30.7%	200.0%
Seneca	2015	729	62	0	17	6	39	667	108	538	21
	2016	641	67	0	27	1	39	574	94	468	12
	% change	-12.1%	8.1%	NA	58.8%	-83.3%	0.0%	-13.9%	-13.0%	-13.0%	-42.9%
Steuben	2015	1,577	186	1	79	12	94	1,391	205	1,155	31
	2016	1,489	187	1	73	14	99	1,302	226	1,033	43
	% change	-5.6%	0.5%	0.0%	-7.6%	16.7%	5.3%	-6.4%	10.2%	-10.6%	38.7%
Suffolk	2015	24,496	2,010	25	167	732	1,086	22,486	2,591	18,649	1,246
	2016	22,198	1,817	33	149	574	1,061	20,381	2,053	17,166	1,162
	% change	-9.4%	-9.6%	32.0%	-10.8%	-21.6%	-2.3%	-9.4%	-20.8%	-8.0%	-6.7%
Sullivan	2015	1,331	171	1	64	15	91	1,160	333	806	21
	2016	1,226	198	4	68	23	103	1,028	264	730	34
	% change	-7.9%	15.8%	300.0%	6.3%	53.3%	13.2%	-11.4%	-20.7%	-9.4%	61.9%
Tioga	2015	460	54	1	23	6	24	406	82	305	19
	2016	462	63	1	25	4	33	399	79	301	19
	% change	0.4%	16.7%	0.0%	8.7%	-33.3%	37.5%	-1.7%	-3.7%	-1.3%	0.0%
Tompkins	2015	2,294	147	0	55	32	60	2,147	324	1,786	37
	2016	1,826	146	2	53	21	70	1,680	215	1,431	34
	% change	-20.4%	-0.7%	NA	-3.6%	-34.4%	16.7%	-21.8%	-33.6%	-19.9%	-8.1%
Ulster	2015	3,011	304	0	96	41	167	2,707	421	2,214	72
	2016	2,631	292	4	72	36	180	2,339	394	1,880	65
	% change	-12.6%	-3.9%	NA	-25.0%	-12.2%	7.8%	-13.6%	-6.4%	-15.1%	-9.7%
Warren	2015	1,087	108	1	51	11	45	979	121	845	13
	2016	1,195	111	2	41	9	59	1,084	132	943	9
	% change	9.9%	2.8%	100.0%	-19.6%	-18.2%	31.1%	10.7%	9.1%	11.6%	-30.8%
Washington	2015	605	91	1	28	1	61	514	92	408	14
	2016	568	95	0	50	5	40	473	93	368	12
	% change	-6.1%	4.4%	-100.0%	78.6%	400.0%	-34.4%	-8.0%	1.1%	-9.8%	-14.3%
Wayne	2015	1,638	201	2	78	23	98	1,437	353	1,036	48
	2016	1,419	147	3	54	18	72	1,272	264	965	43
	% change	-13.4%	-26.9%	50.0%	-30.8%	-21.7%	-26.5%	-11.5%	-25.2%	-6.9%	-10.4%
Westchester	2015	12,232	2,146	17	169	739	1,221	10,086	1,306	8,098	682
	2016	12,529	2,109	23	144	767	1,175	10,420	1,326	8,488	606
	% change	2.4%	-1.7%	35.3%	-14.8%	3.8%	-3.8%	3.3%	1.5%	4.8%	-11.1%

Appendix 6  
**New York State Index Crime Summary by County**  
 2015 vs. 2016

County	Year	Total	Violent	Murder	Rape	Robbery	Agg. Assault	Property	Burglary	Larceny	MV Theft
Wyoming	2015	<b>422</b>	<b>58</b>	3	16	0	39	<b>364</b>	60	294	10
	2016	<b>327</b>	<b>48</b>	3	14	1	30	<b>279</b>	52	223	4
	% change	<b>-22.5%</b>	<b>-17.2%</b>	0.0%	-12.5%	NA	-23.1%	<b>-23.4%</b>	-13.3%	-24.1%	-60.0%
Yates	2015	<b>299</b>	<b>25</b>	0	8	0	17	<b>274</b>	84	188	2
	2016	<b>320</b>	<b>17</b>	0	6	1	10	<b>303</b>	78	223	2
	% change	<b>7.0%</b>	<b>-32.0%</b>	NA	-25.0%	NA	-41.2%	<b>10.6%</b>	-7.1%	18.6%	0.0%

Notes: NA indicates that the percentage change is not applicable because the count in 2015 was zero.

Index and violent crime totals for 2015 and 2016 include the number of rapes reported under the expanded definition.

\*Schenectady Police Department identified a discrepancy in the number of crimes submitted to DCJS in 2015 that was not resolved by the publication of this report. As a result, the number of Index crimes for Schenectady County may be lower than the actual number of offenses reported to law enforcement in 2015 and caution should be used when comparing those numbers to 2016 statistics.