

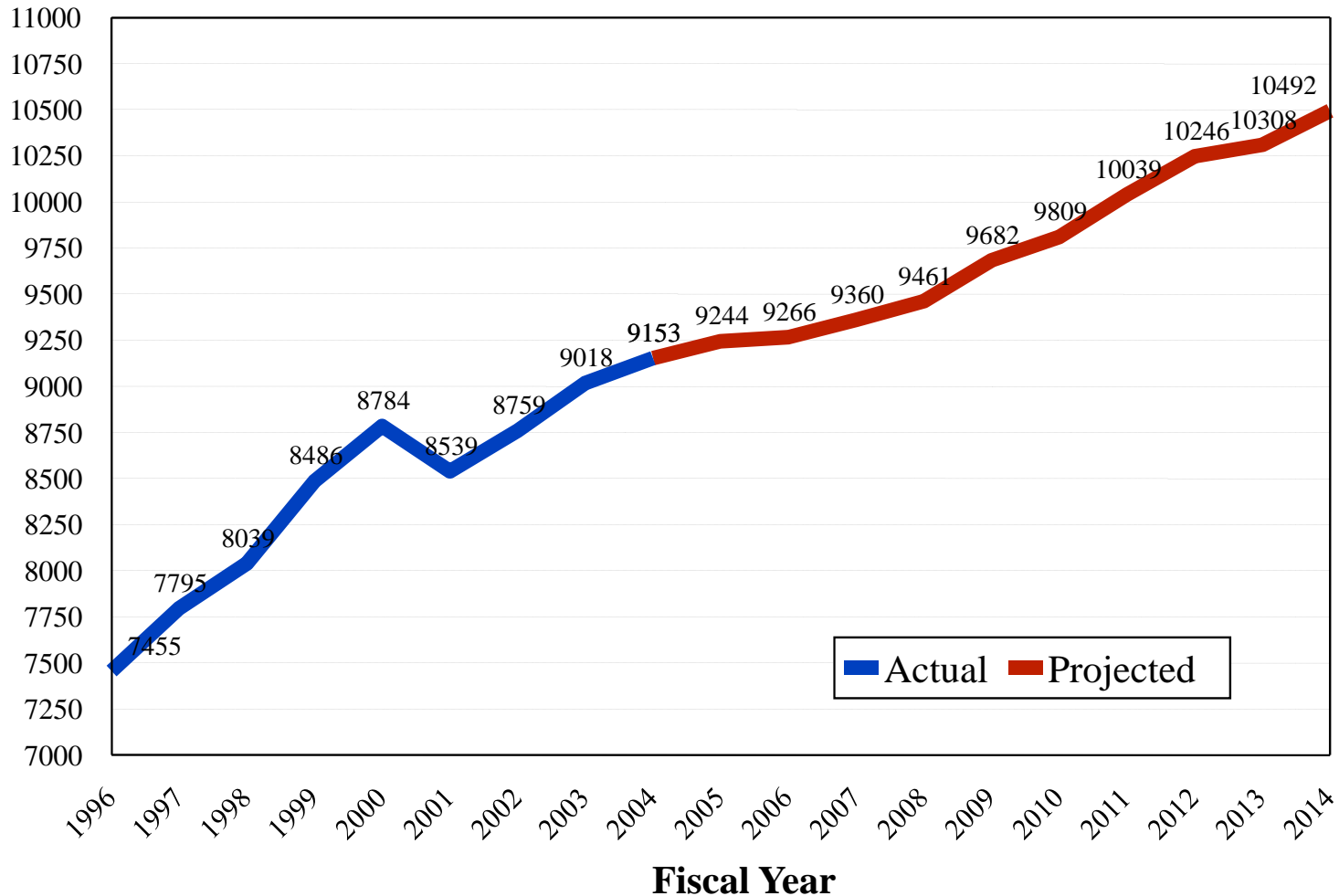


# The Kansas Experience

or Lady Macbeth Was Wrong

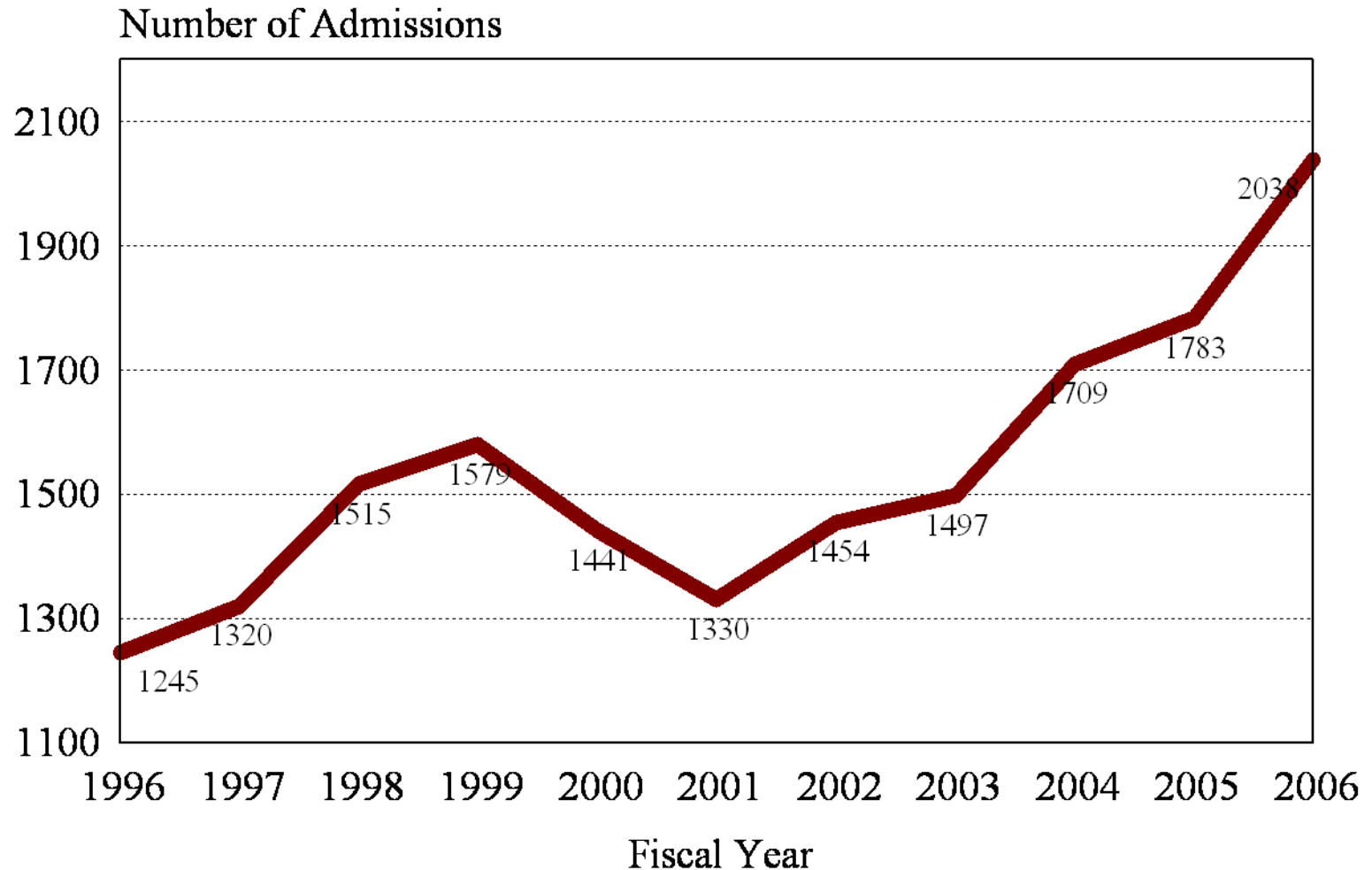
# Kansas Prison Population Trends

## Actual and Projected Prison Population



# KANSAS PRISON ADMISSION TRENDS

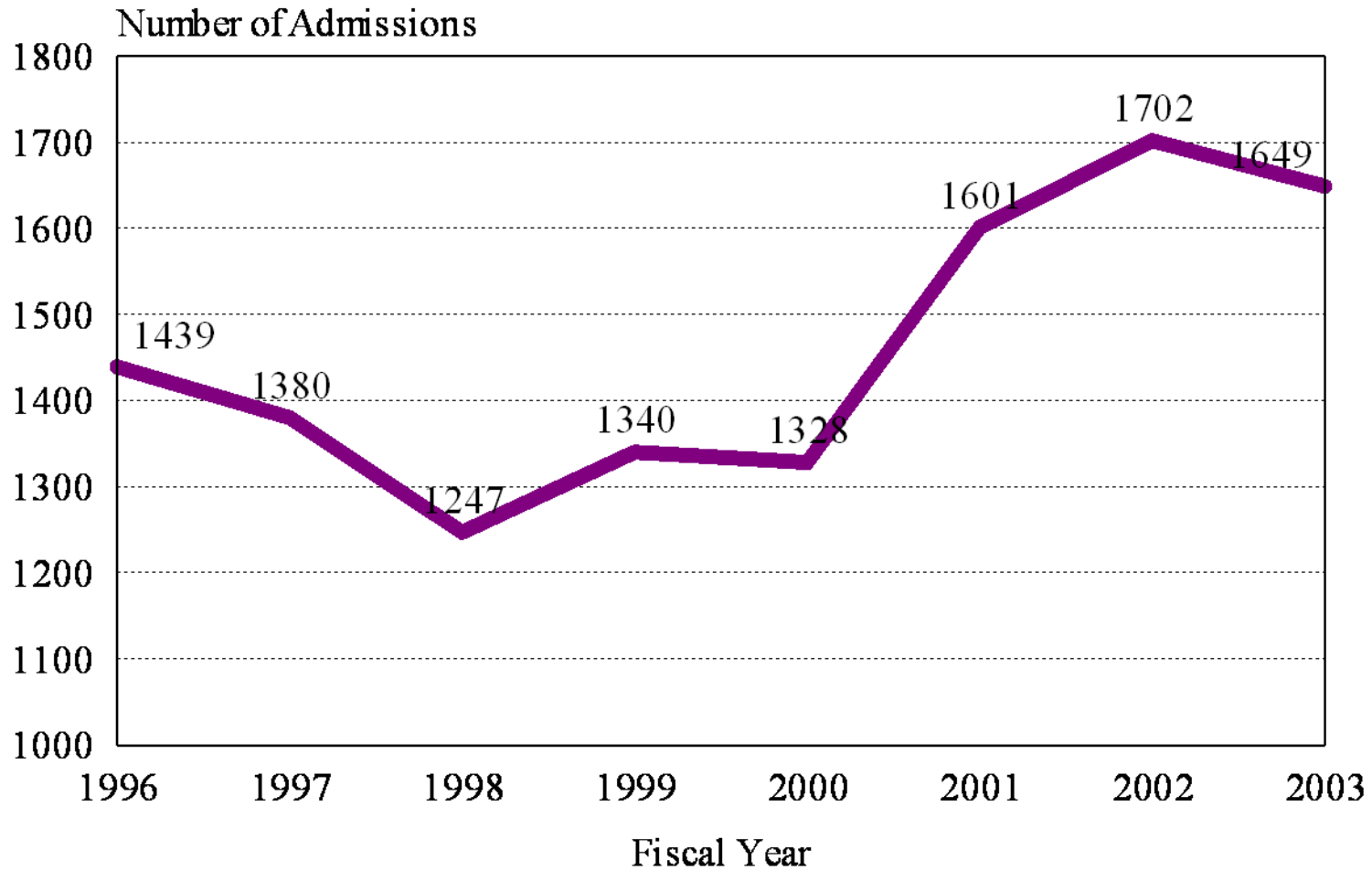
## Probation Condition Violators



Source: KDOC admission files

# KANSAS PRISON ADMISSION TRENDS

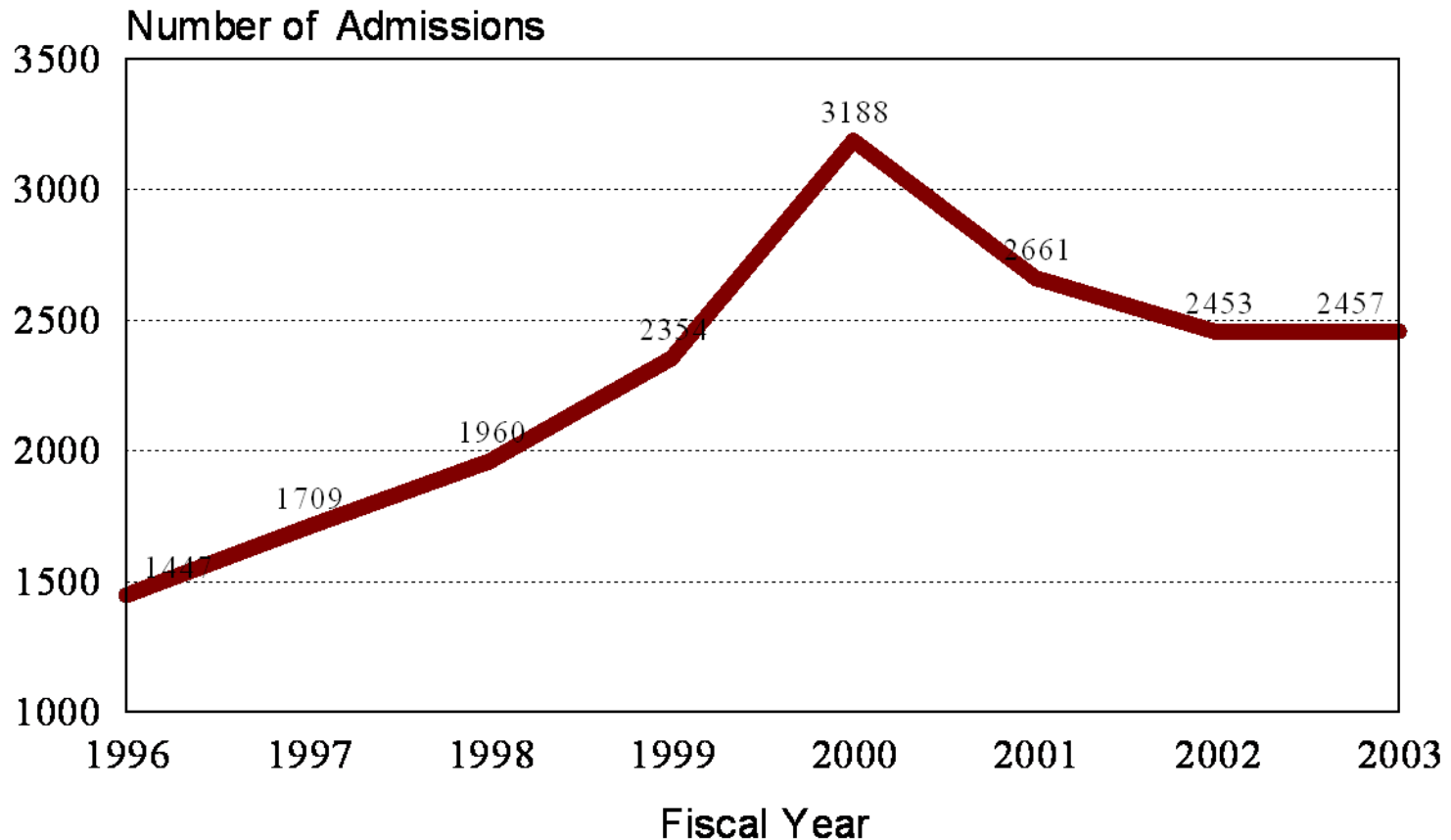
## New Court Commitments



Source: DOC admission files

# KANSAS PRISON ADMISSION TRENDS

## Parole/Postrelease Condition Violators

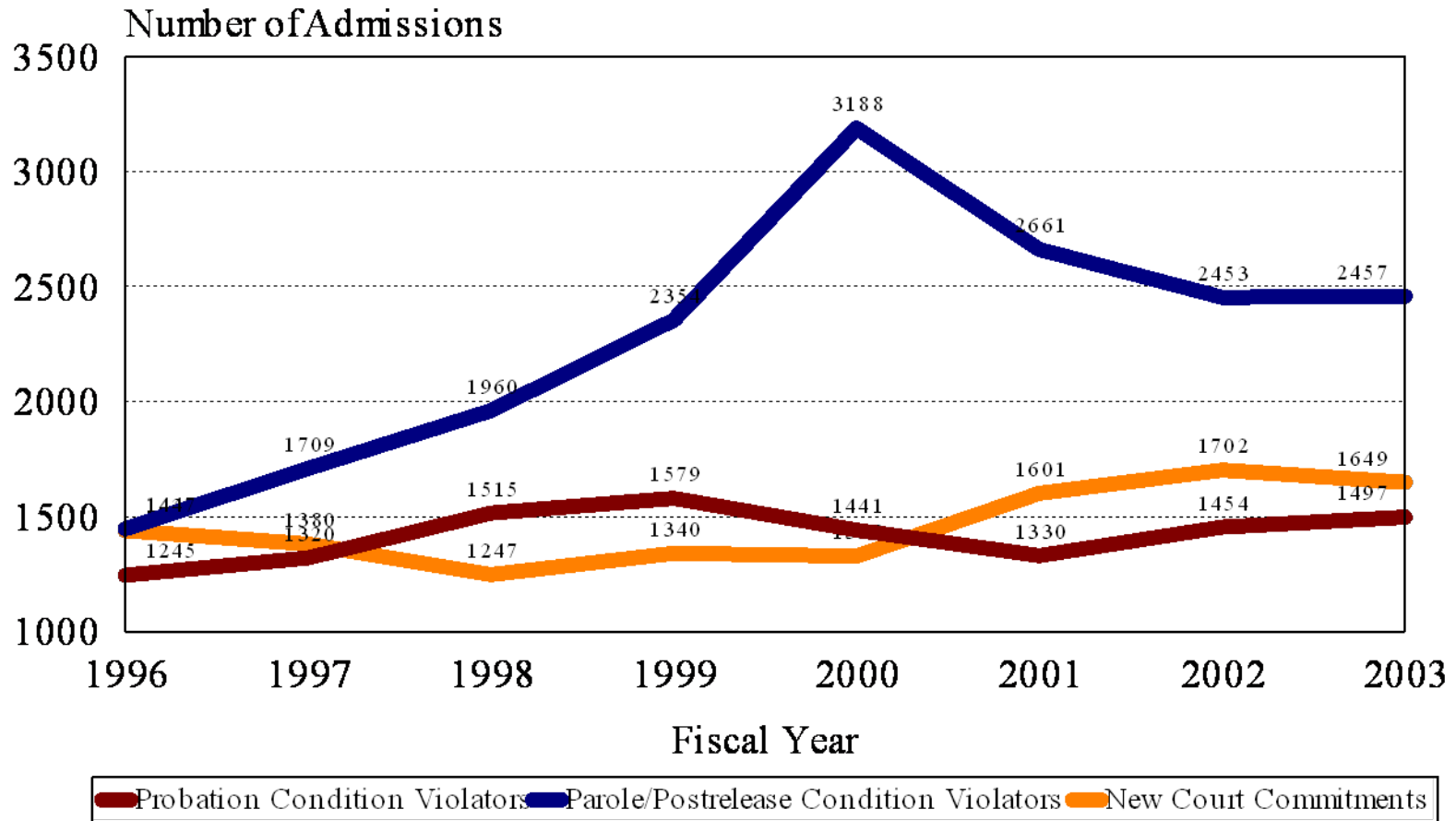


Source: DOC admission file

Note: Including condition conditional-release violators

# KANSAS PRISON ADMISSION TRENDS

## Admissions by Type



Source: DOC admission files



# What did we do?

- Reframed how we could make Kansas safer
  - We were very good at security
  - We were not so good at offender performance upon release
- Challenge was to be as good at offender performance as we were at security



# What did we do?

- Explained to legislature what we wanted to do and how we wanted to be judged.
- Asked for their formal concurrence
- Explained to staff that we had legislative support for this effort
- Rewrote most job descriptions and performance outcomes for evaluations
- Provided massive amounts of training
- Changed questions on promotion boards



# What did we do?

- Implemented actuarial risk assessments
- Developed inmate program plans and parole plans based on those assessments
- Used risk based supervision and prioritization
- Measured performance regularly and reported back to legislature and staff

# Performance Measures

- 8,586 – facility population on 7/7/09 (9,251 on 2/19/04)  
7% reduction
- 5,930 – Parole Population on 7/7/09 (4,261 on 2/19/04,  
4,167 on 6/30/03) 42.3% increase
- 2,555 – inmate grievances in FY '08 (3,461 in FY '04) 36%  
reduction
- 96 – FY 2009 monthly parole revocation rate (FY 2003  
rate = 203/month) 53% reduction
- 103.2 – FY 2009 community corrections (high risk  
probation) revocation rate - 25% reduction
- 225 – average number of parole absconders for FY 2009  
(739 on 6/30/00, 467 on 6/30/03, 189 on 3/16/09) 69%  
reduction
- 36% reduction in felony convictions for crimes committed  
on parole (FY 1998 – 2000 avg. [835] compared to FY  
2004 – 2008 avg. [536])

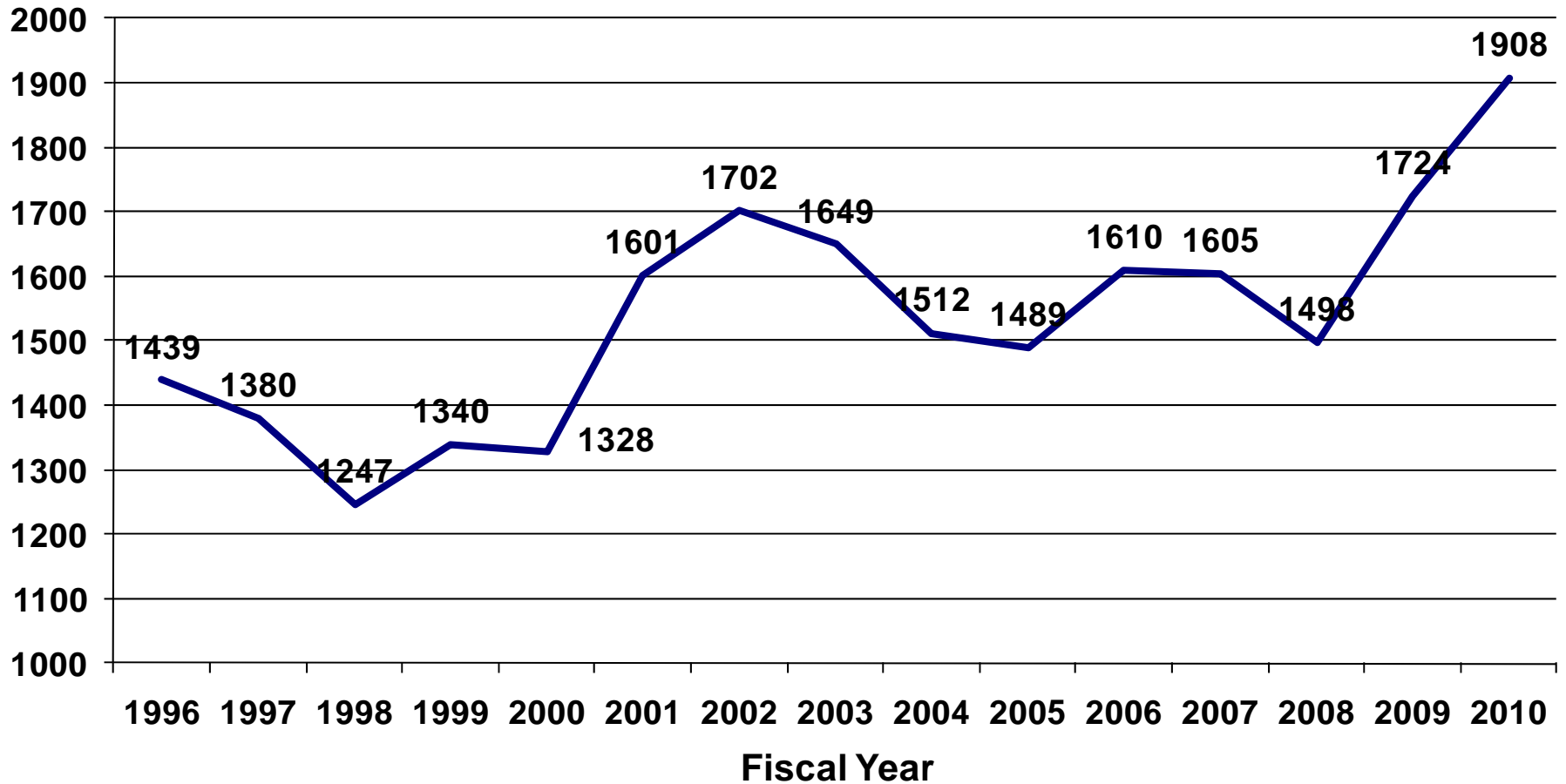


# Things change

- Lost 65% of all funding and 95% of SGF for treatment, education and support services
- 6% reduction in funding for community corrections
- Holding open 10% of our parole positions

# KANSAS PRISON ADMISSION TRENDS

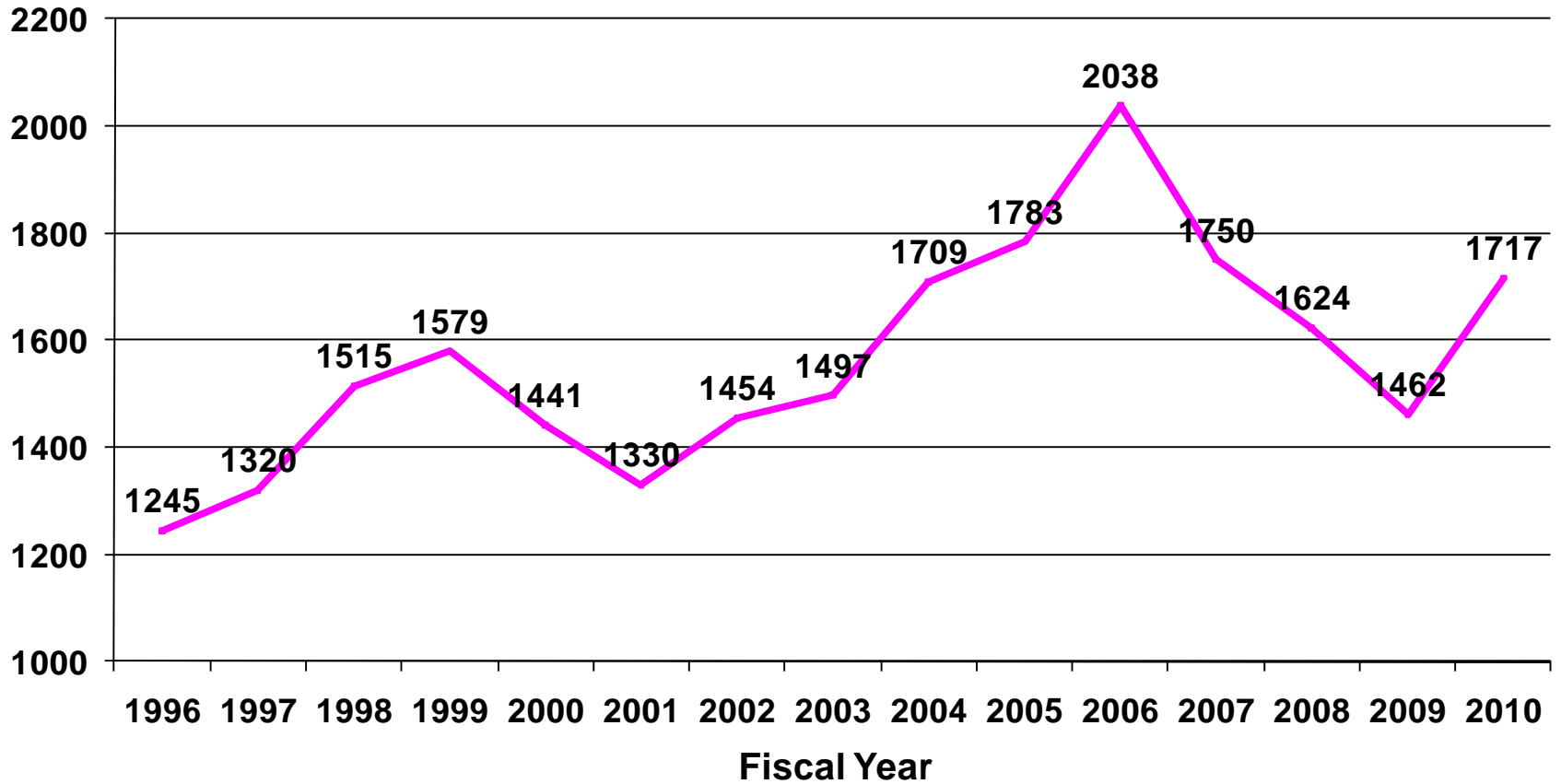
## Direct New Court Commitments



Source: KDOC admission files

# KANSAS PRISON ADMISSION TRENDS

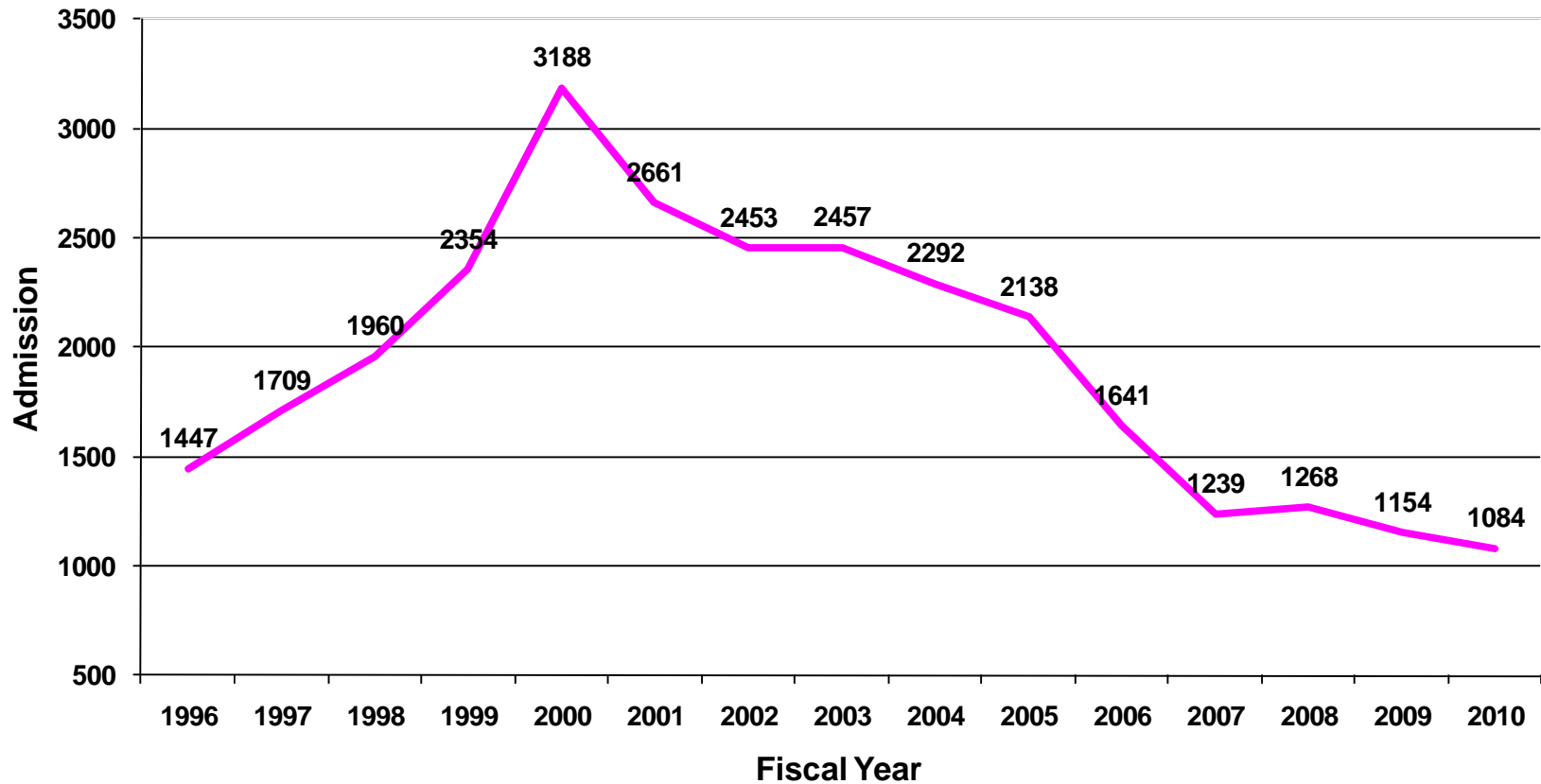
## Probation Condition Violators



Source: KDOC admission files

# KANSAS PRISON ADMISSION TRENDS

## Parole/Postrelease Condition Violators

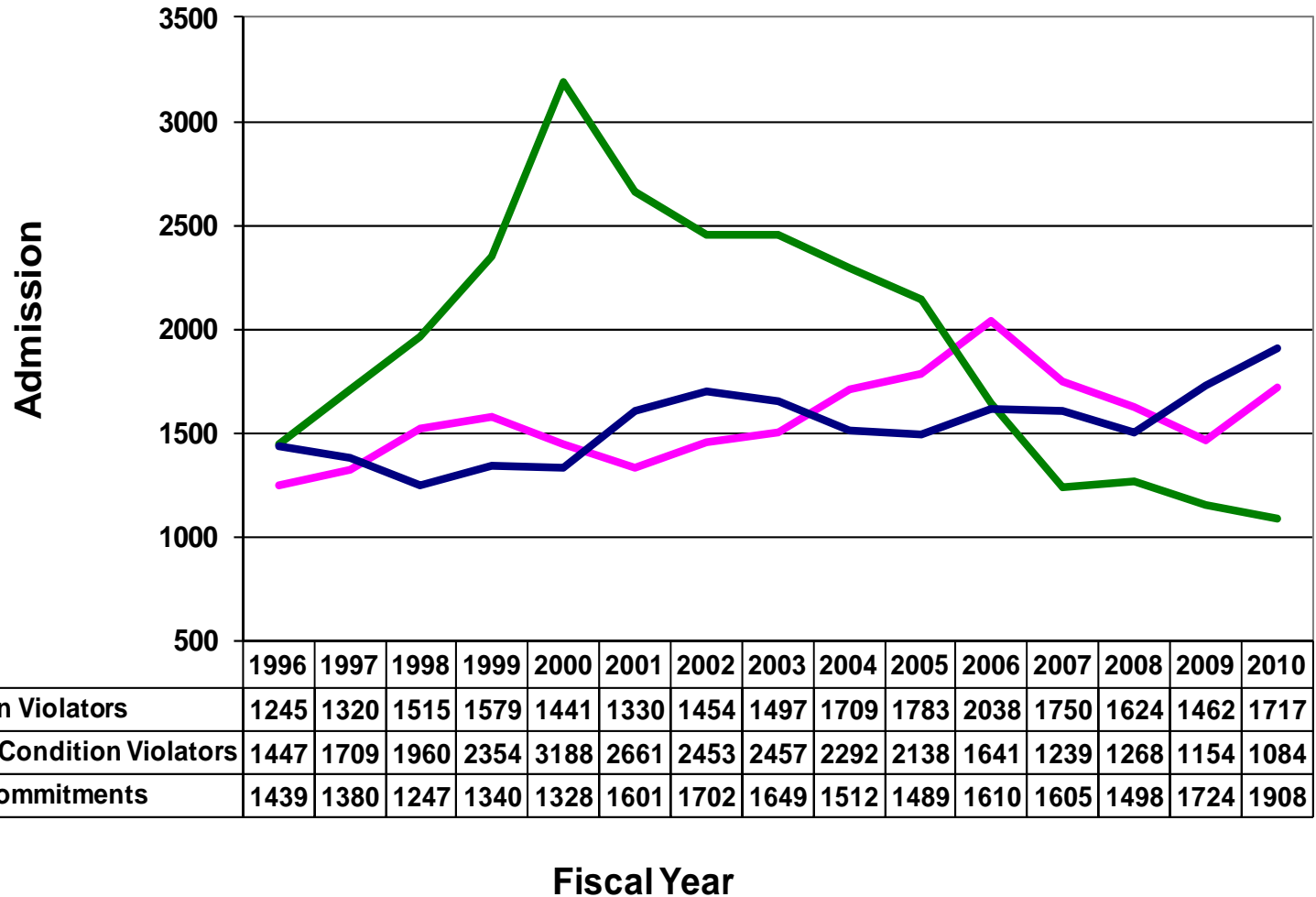


Source: KDOC admission files

Note: Including condition conditional-release violators

# KANSAS PRISON ADMISSION TRENDS

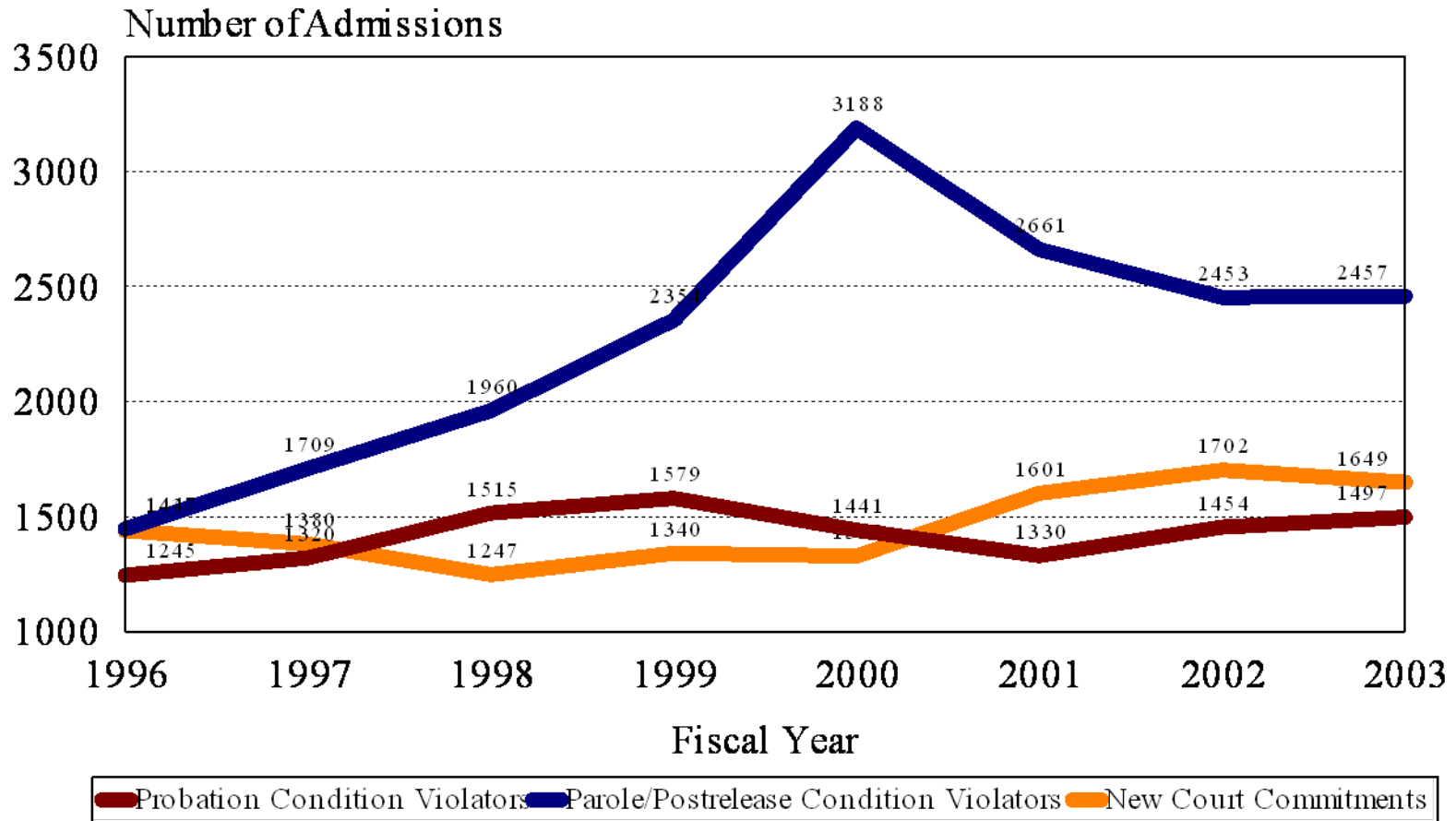
## Admissions by Type



Source: KDOC admission files

# KANSAS PRISON ADMISSION TRENDS

## Admissions by Type



Source: DOC admission files



# So what's the deal?

- Since 2005 the legislature made 108 changes to sentencing statutes
- 97 increased penalties

- 
- Lady Macbeth was wrong. What's done **can** be undone.