

Measuring Crime in Indian Country: A Review of Arizona's Tribal Crime Data

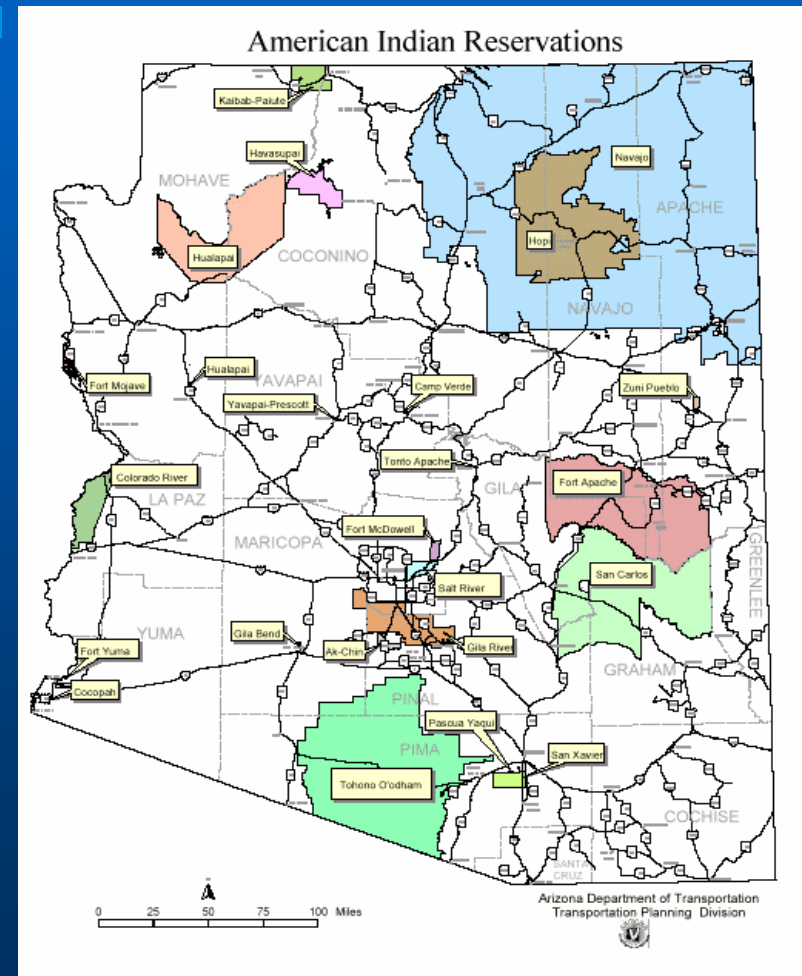
Phillip Stevenson, Director
Arizona Statistical Analysis Center

Prepared for:

The JRSA/BJA Annual Conference
October 22, 2009

Tribes in Arizona

- 22 federally recognized tribes
- 363,232 enrolled tribal members
- 179,273 people living on tribal lands
- 33,703 square miles of land



“Types” of Tribal Law Enforcement Agencies

- **BIA – Direct**
 - Direct service
- **Public Law 638**
 - Fed \$\$ support for local law enforcement
- **BIA – Compact**
 - Self Governance
- **Public Law 280**

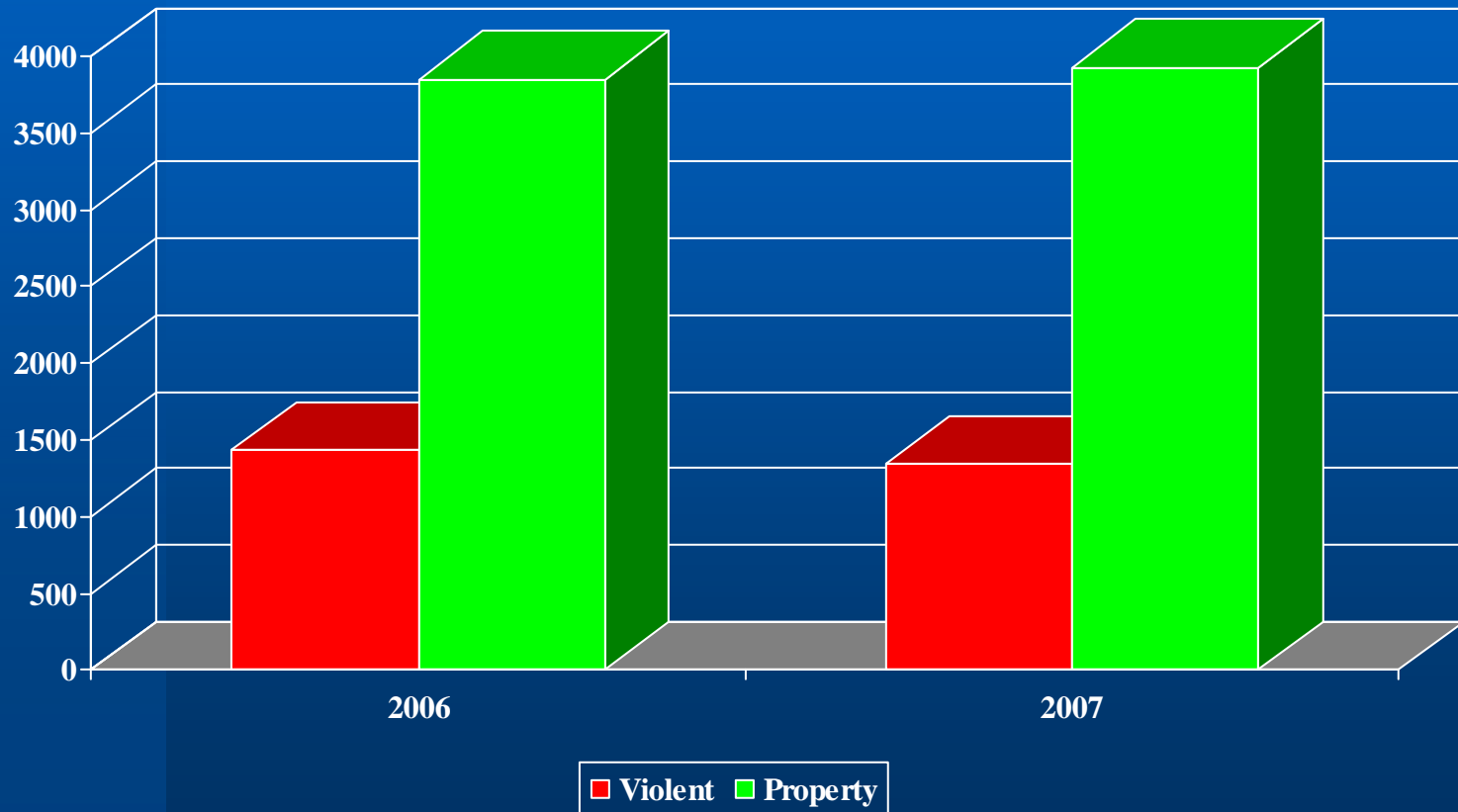
Data Sources

- **Bureau of Indian Affairs (BIA)**
 - Reported crime from tribes to BIA
- **Arizona Computerized Criminal History Information (ACCH)**
 - Crimes reported to state repository
- **Arizona Youth Survey**
 - Self-reported substance abuse and delinquency
- **ACJC Gang Threat Assessment**
 - Law enforcement's perception of local gang problem

Data Source and Tribal Participation

Data Source	Number of Tribes
Bureau of Indian Affairs	17
Arizona Computerized Criminal History	18
Arizona Youth Survey	5
Arizona Gang Threat Assessment	13

BIA Data: UCR Index Offenses



ACCH data

- **ORI's to identify submissions to the repository from tribal agencies**
- **Arizona criminal code offense types to categorize offenses**
- **Only the first arrest count**

ACCH Data: Arrestee Demographics

	2000	2001	2002	2003	2004	2005	2006	2007	Total
Male	86.4	83.7	81.5	82.5	82.4	80.8	78.7	78.5	81.1
Female	13.6	16.3	18.5	17.5	17.6	19.2	21.3	21.5	18.9
Native American	8.5	10.0	9.5	10.5	8.9	6.3	8.6	7.4	8.5
African American	4.2	3.0	4.8	3.0	5.4	4.9	4.2	4.4	4.3
Caucasian	86.3	86.2	85.1	86.1	84.3	87.5	85.7	87.3	86.2
Asian	0.8	0.3	0.2	0.3	0.8	0.7	0.7	0.4	0.5
Unknown	0.1	0.5	0.3	0.2	0.6	0.6	0.7	0.5	0.5

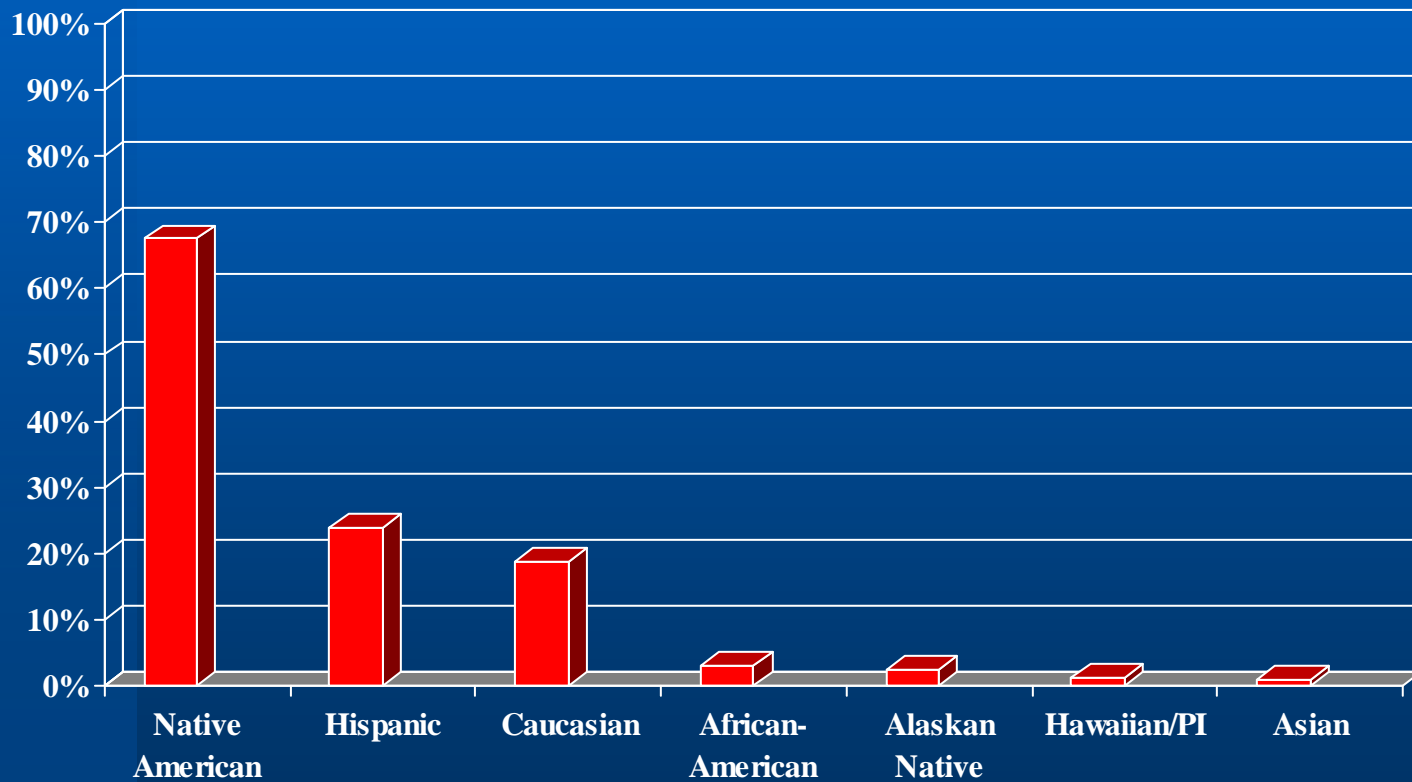
ACCH Data: Most Frequently Submitted Offense Types

ARS Offense Type	Percentage of ACCH Submissions
Drug Offenses	18.0
Escape and Related Offenses	15.8
Driving Under the Influence	8.8
Theft	8.8
Assault and Related Offenses	8.7
Offenses Against Public Order	7.6
Interference with Judicial Proceedings	6.2
Miscellaneous	6.1
Motor Vehicle License Violations	4.6
Criminal Trespass and Burglary	4.1

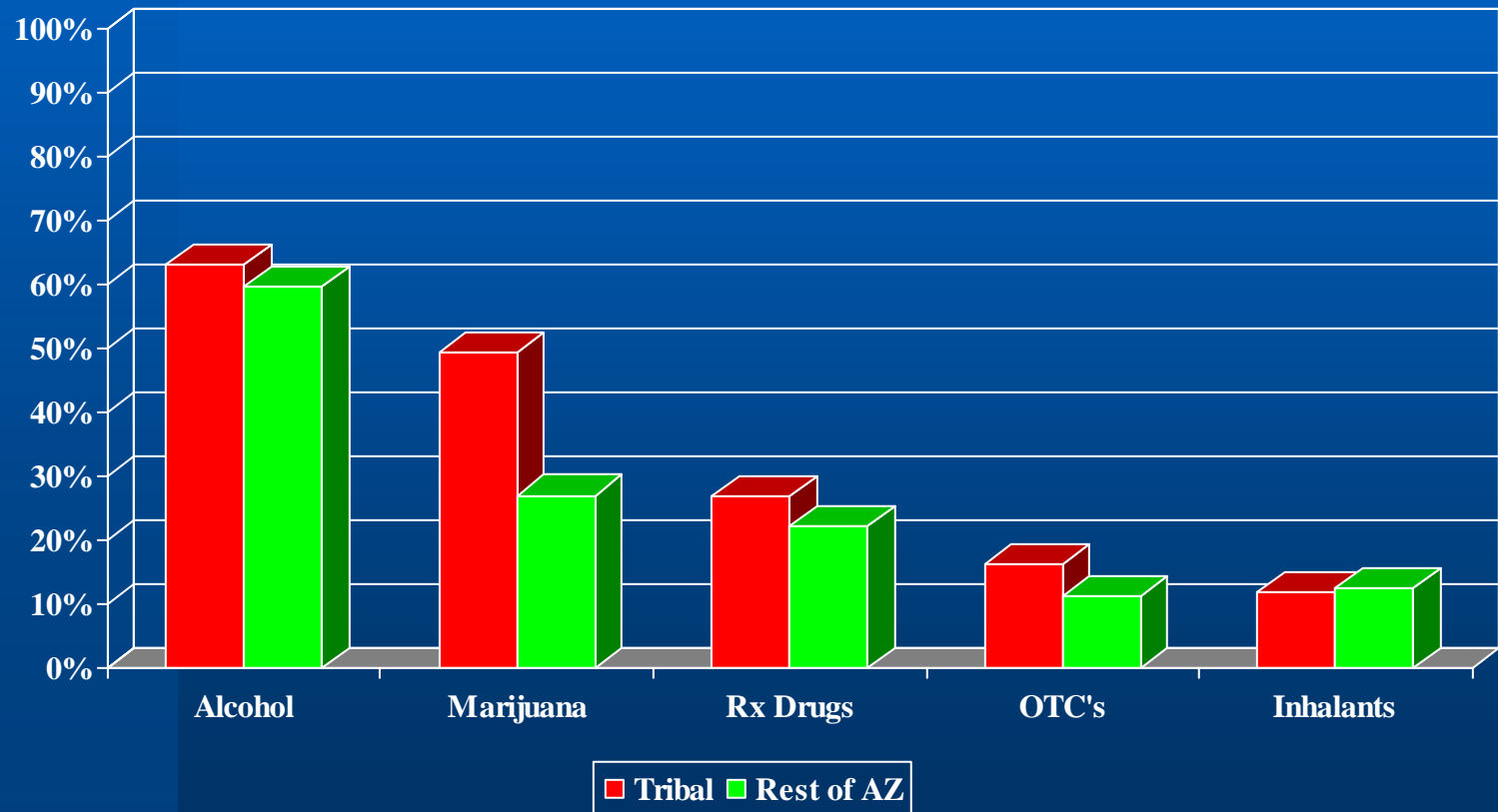
AYS data

- **School-based survey of 8th, 10th, and 12th grade students in AZ**
- **Risk and protective factors, substance use, delinquency, etc.**
- **Five schools on tribal lands participated in AYS08**

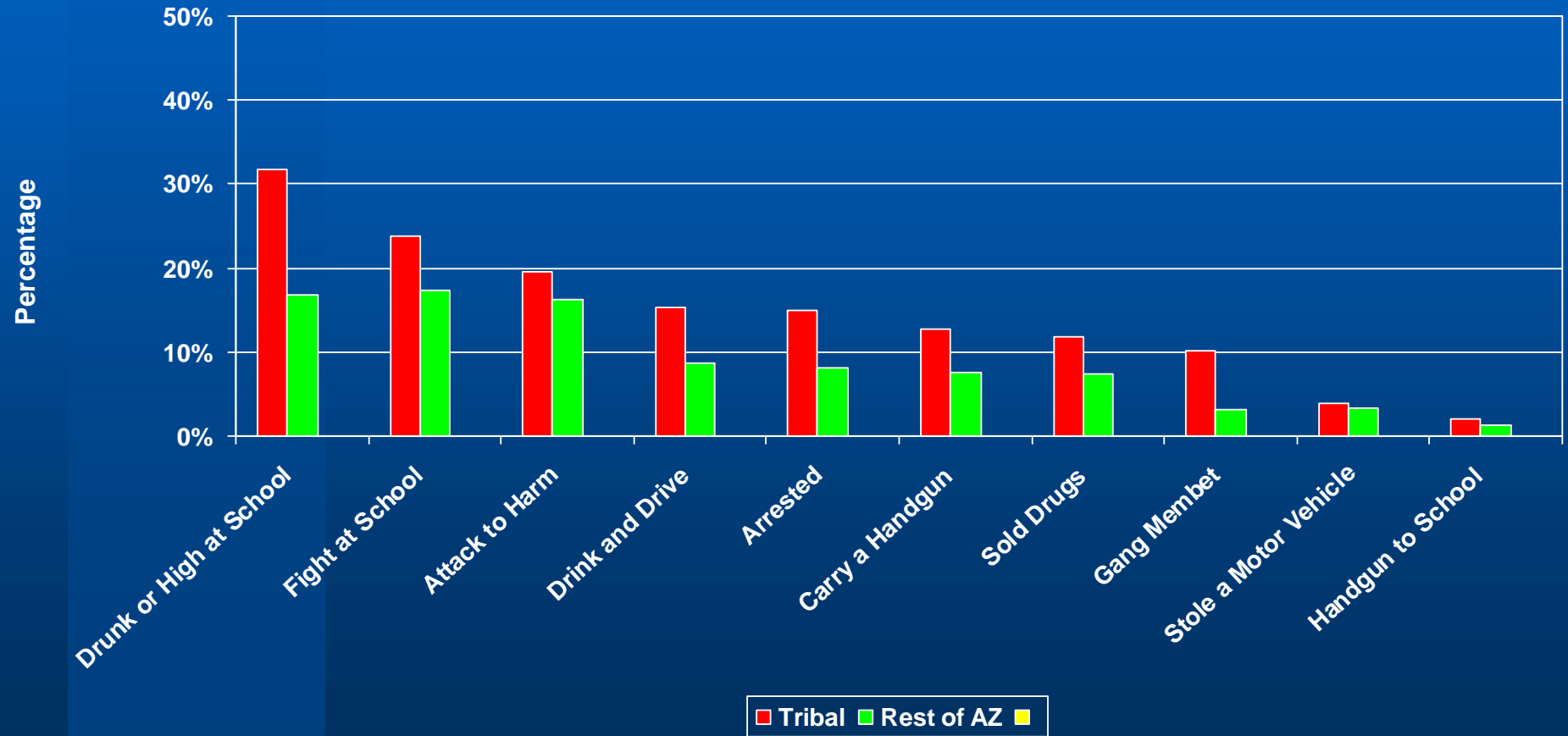
AYS08 Data: Respondent Race / Ethnicity



AYS08 Data: Alcohol and Drug Use



Youth Self-Reported Lifetime Substance Use 2004, 2006, 2008



Gang Assessment Data

- 10 of 13 tribal law enforcement agencies reported gangs and gang activity on the reservation
- Bloods, Crips, and Sureños all have a presence on tribal lands.
- More localized gangs as well (e.g., Warrior Society, ACR, Rez Crew, Native Pride, etc.)
- Primary crimes tribal gangs are involved in are vandalism, graffiti, assault, drugs

So what?

- Established a stronger relationship with tribal CJ agencies and state-wide inter-tribal council
- Benchmark description of what we know about crime on tribal lands in Arizona
- A starting point for improving crime data collection on tribal lands
- For some tribes, the availability of youth data to inform prevention and intervention strategies

FOR MORE INFO...

Phillip Stevenson

Director, Statistical Analysis Center

Arizona Criminal Justice Commission

602-364-1157 or pstevenson@azcjc.gov