

**VERMONT STATEWIDE DISTRICT COURT
SEX OFFENSE CHARGES * DISPOSED 2001 - 6/2004**

	Aggravated Sexual Assault		Lascivious Conduct		L & L With a Child		Sexual Assault		Sexual Assault on a Minor		Total	
	N	%	N	%	N	%	N	%	N	%	N	%
Original Charges	147		308		373		199		506		1,533	
Final Charges **	109	74.1%	247	80.2%	339	90.9%	153	76.9%	401	79.2%	1,249	81.5%
Charges Dismissed												
By Court	4	3.7%	11	4.5%	10	2.9%	6	3.9%	6	1.5%	37	3.0%
By Prosecutor	52	47.7%	76	30.8%	116	34.2%	88	57.5%	132	32.9%	464	37.1%
Total	56	51.4%	87	35.2%	126	37.2%	94	61.4%	138	34.4%	501	40.1%
Charges Carried Forward	53	48.6%	160	64.8%	213	62.8%	59	38.6%	263	65.6%	748	59.9%
Charges to Trial												
Charges Acquitted	0	0.0%	7	4.4%	4	1.9%	10	16.9%	12	4.6%	33	4.4%
Charges Found Guilty	6	11.3%	13	8.1%	4	1.9%	5	8.5%	18	6.8%	46	6.1%
Total	6	11.3%	20	12.5%	8	3.8%	15	25.4%	30	11.4%	79	10.6%
Charges Disposed by Plea	47	88.7%	140	87.5%	205	96.2%	44	74.6%	233	88.6%	669	89.4%
Total Charges Convicted	53	100.0%	153	95.6%	209	98.1%	49	83.1%	251	95.4%	715	95.6%
Sentence Type:												
Incarceration	28	52.8%	40	26.1%	56	26.8%	19	38.8%	56	22.3%	199	27.8%
Split Sentence	20	37.7%	38	24.8%	68	32.5%	19	38.8%	105	41.8%	250	35.0%
Probation	4	7.5%	46	30.1%	62	29.7%	9	18.4%	47	18.7%	168	23.5%
Deferred	1	1.9%	27	17.6%	20	9.6%	1	2.0%	42	16.7%	91	12.7%
Fine/Restitution	0	0.0%	1	0.7%	0	0.0%	0	0.0%	0	0.0%	1	0.1%
Other	0	0.0%	0	0.0%	0	0.0%	0	0.0%	0	0.0%	0	0.0%
Unknown	0	0.0%	1	0.7%	3	1.4%	1	2.0%	1	0.4%	6	0.8%
Total	53		153		209		49		251		715	

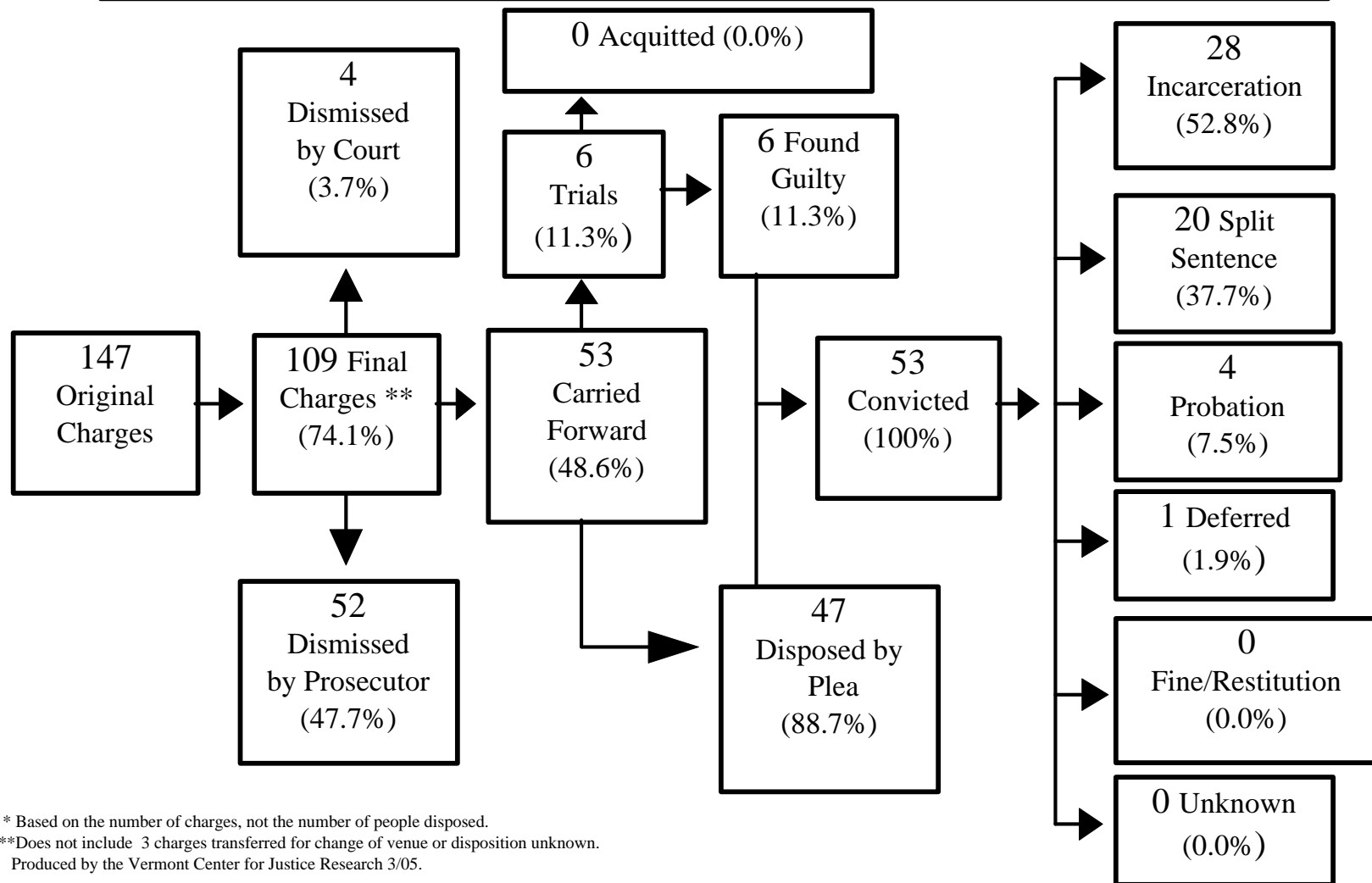
* Based on the number of charges, not the number of people charged.

** Does not include 18 charges with disposition "transferred for change of venue" or disposition unknown.

Does not include 5 charges with disposition "transferred to juvenile court".

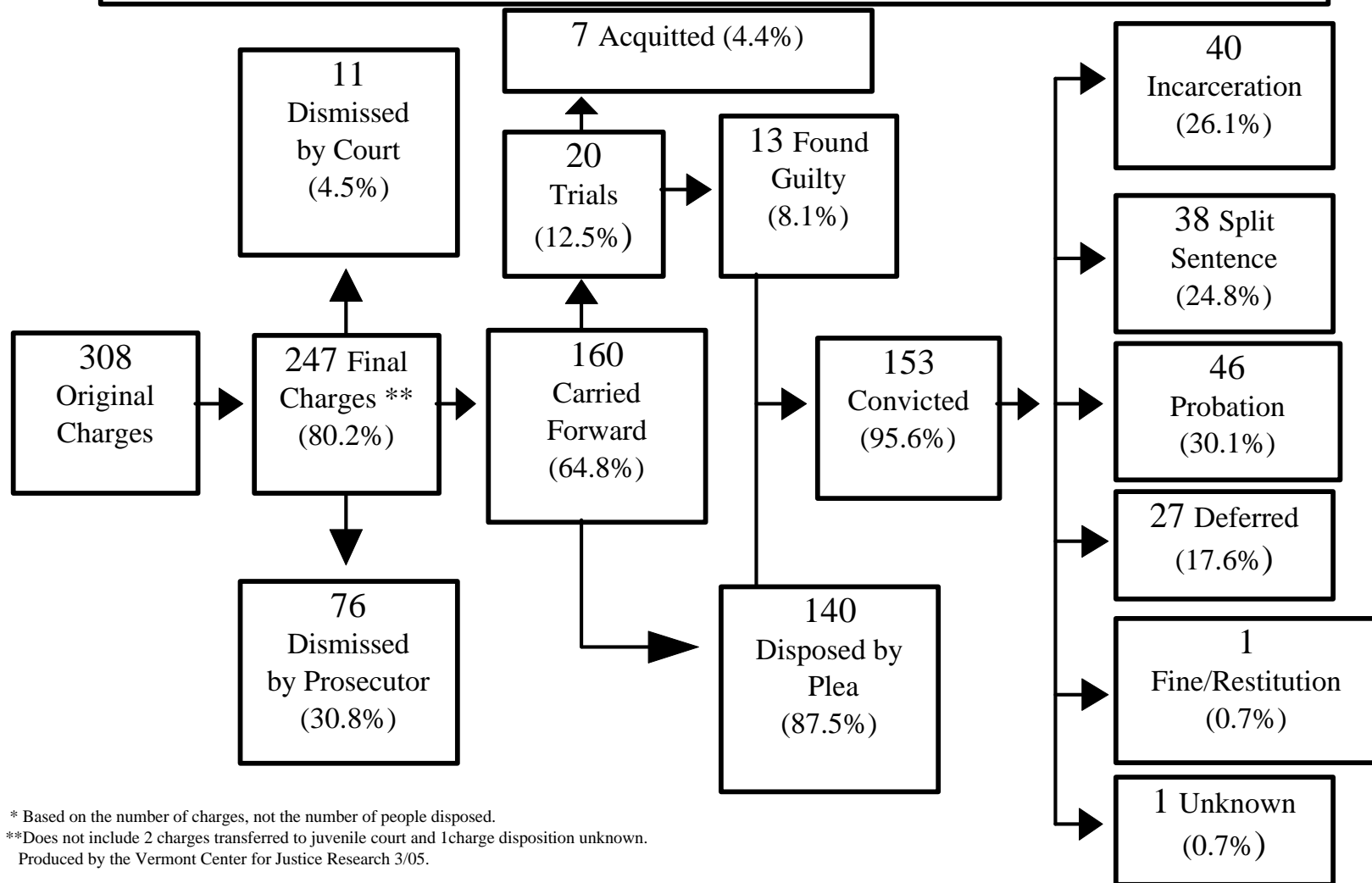
Percentages computed as follows: Final Charges as percent of Original Charges; Charges Dismissed, Charges Carried Forward as percent of Final Charges; Charges to Trial, Charges Disposed by Plea, Charges Convicted as percent of Charges Carried Forward; Sentence Type as percent of Charges Convicted.

Aggravated Sexual Assault Charges* Disposed 2001 - 6/2004



* Based on the number of charges, not the number of people disposed.
 **Does not include 3 charges transferred for change of venue or disposition unknown.
 Produced by the Vermont Center for Justice Research 3/05.

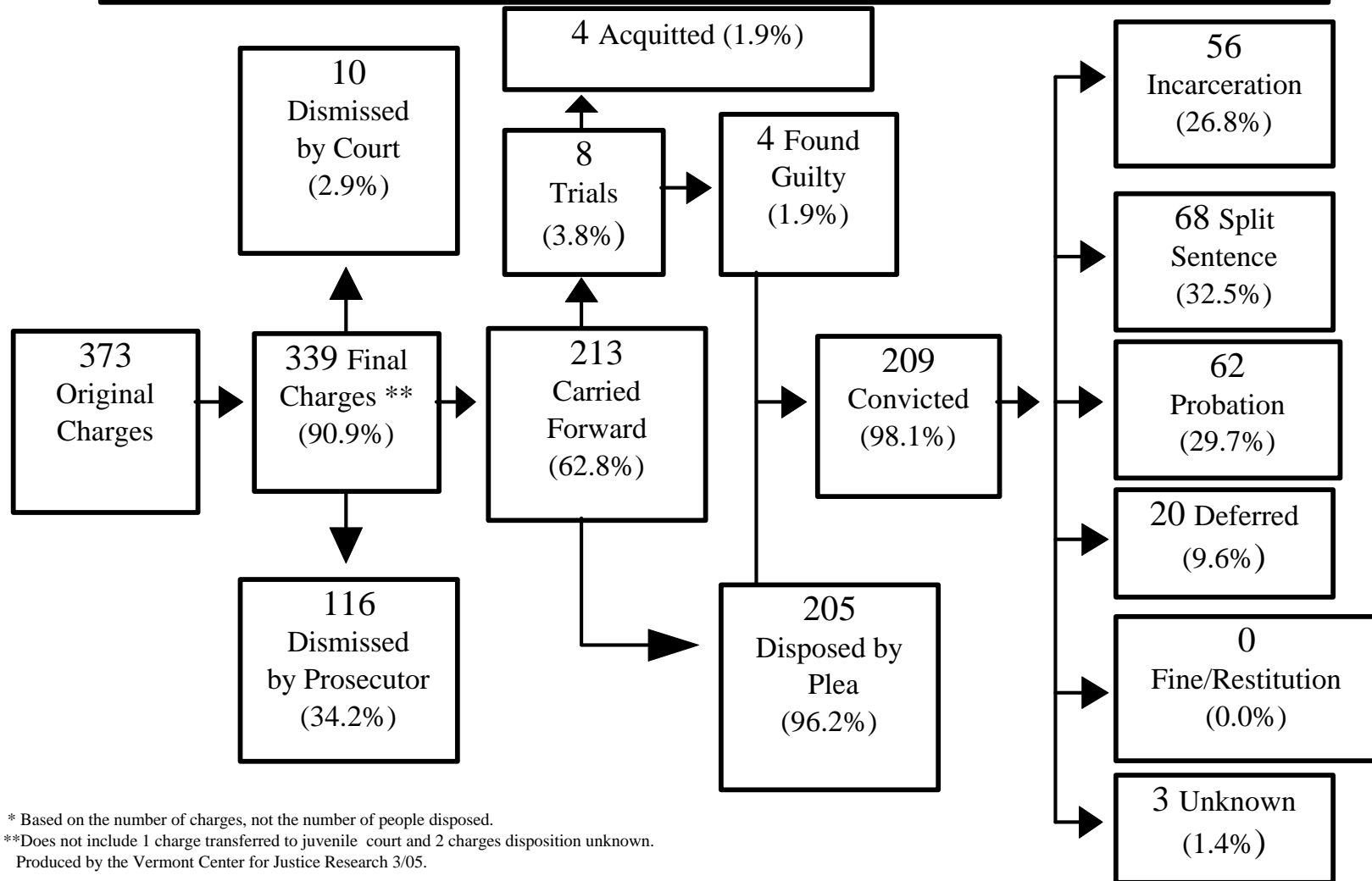
Lascivious Conduct Charges* Disposed 2001 - 6/2004



* Based on the number of charges, not the number of people disposed.
 **Does not include 2 charges transferred to juvenile court and 1 charge disposition unknown.
 Produced by the Vermont Center for Justice Research 3/05.

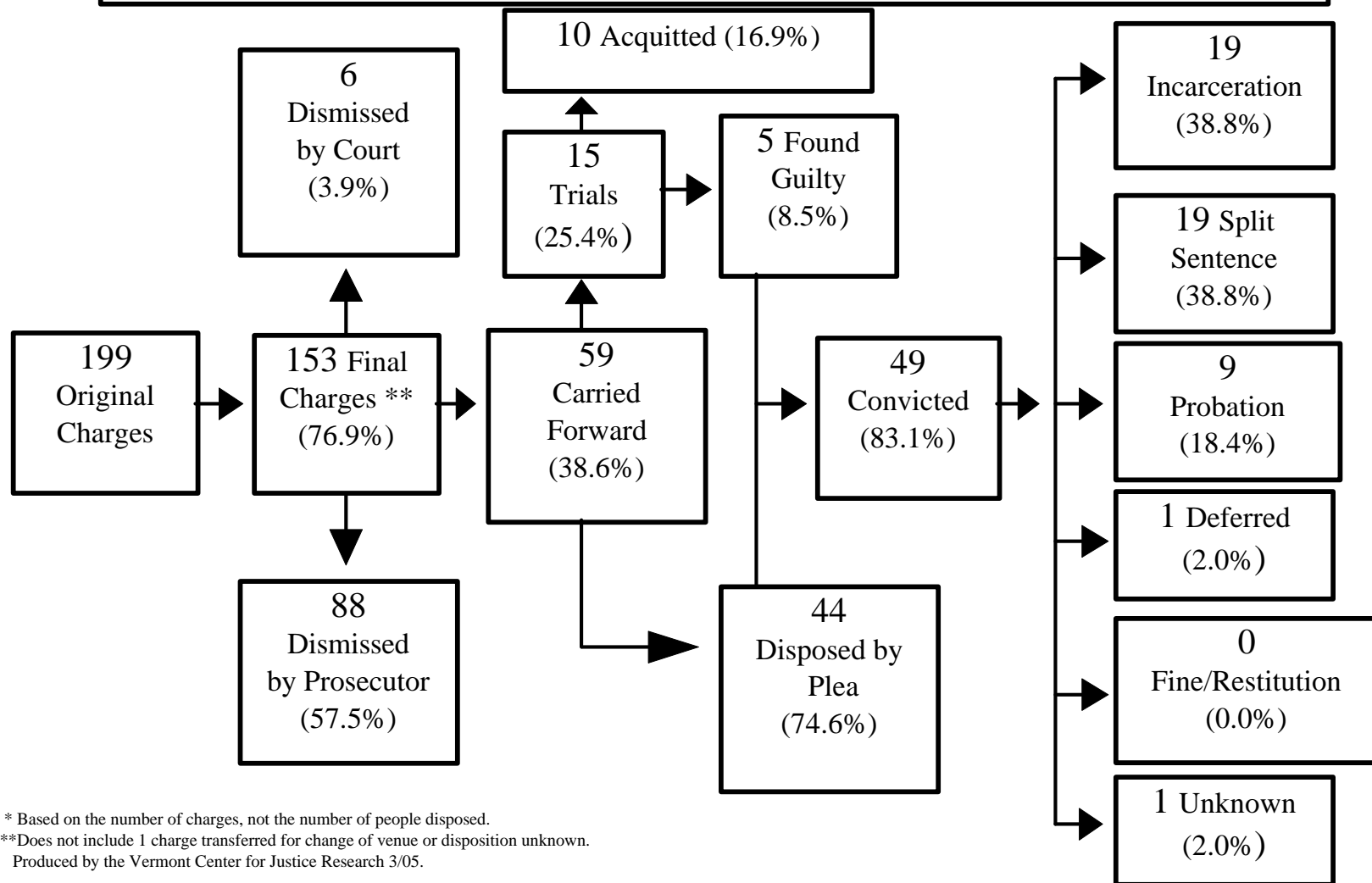
L&L With a Child

Charges* Disposed 2001 - 6/2004



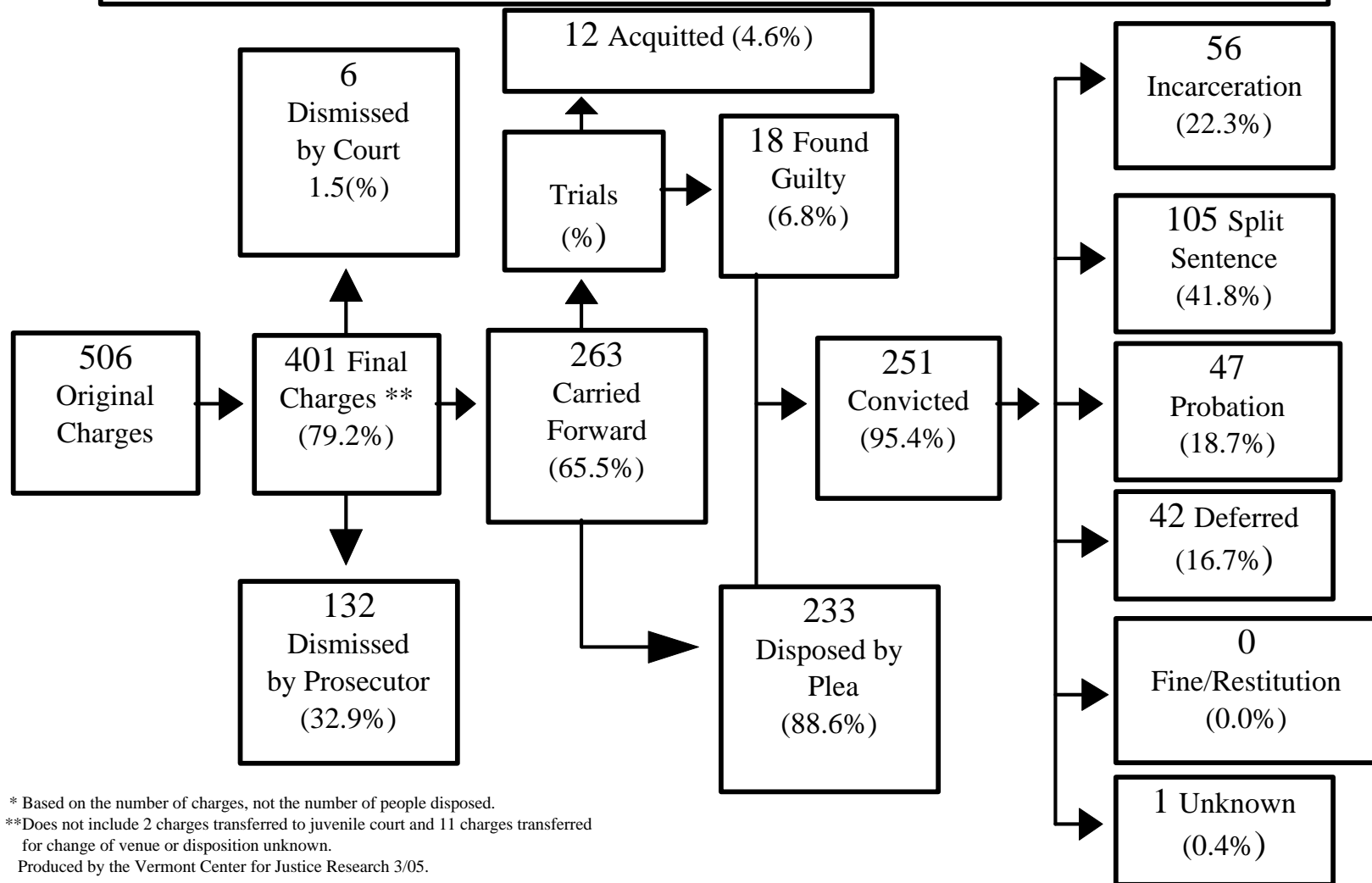
* Based on the number of charges, not the number of people disposed.
 **Does not include 1 charge transferred to juvenile court and 2 charges disposition unknown.
 Produced by the Vermont Center for Justice Research 3/05.

Sexual Assault Charges* Disposed 2001 - 6/2004



* Based on the number of charges, not the number of people disposed.
 **Does not include 1 charge transferred for change of venue or disposition unknown.
 Produced by the Vermont Center for Justice Research 3/05.

Sexual Assault on a Minor Charges* Disposed 2001 - 6/2004



* Based on the number of charges, not the number of people disposed.
 **Does not include 2 charges transferred to juvenile court and 11 charges transferred for change of venue or disposition unknown.
 Produced by the Vermont Center for Justice Research 3/05.